



YA/MA Series

**HER BAO
MACHINERY**

Digital Rotary Table

THE BEST CHOICE
High Precision Rotary Positioning

Product Introduction

YAMAHIRO specializes in multi-axis machining based on years of experience in four-axis and five-axis machining centers. We develop outstanding products for various industries, enhance application technology, and establish stable quality to meet international demands.

Rigorous design, precise product analysis



Precision manufacturing



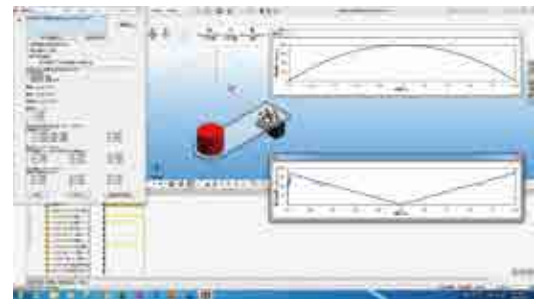
Precision assembly



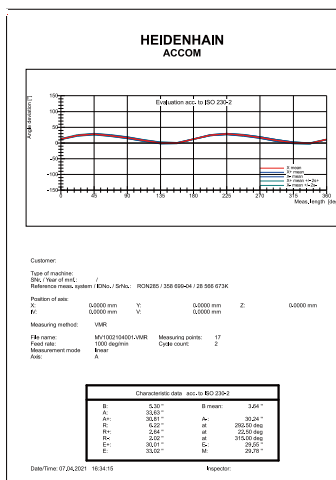
ISO quality assurance



Product application SIM analysis



Final product inspection



Precision Manufacturing Striving for Excellence

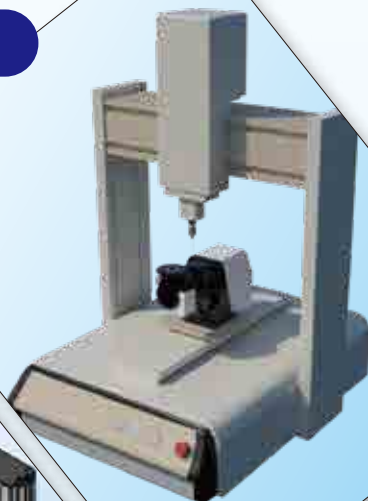
Automated Rotary Motion Module

Optimal Choice for High Precision Performance

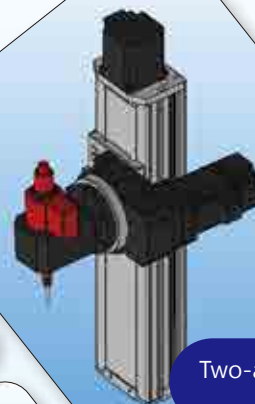


YA/MA Hollow Digital Rotary Platform

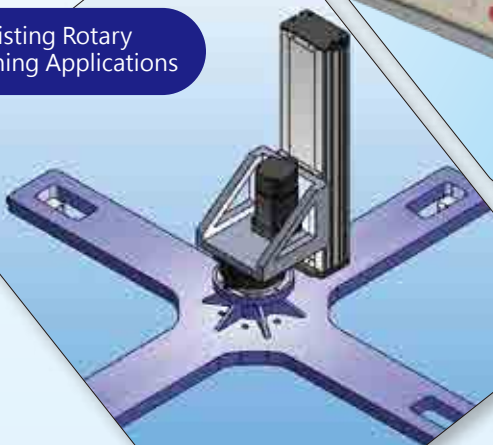
Five-axis Linked Applications



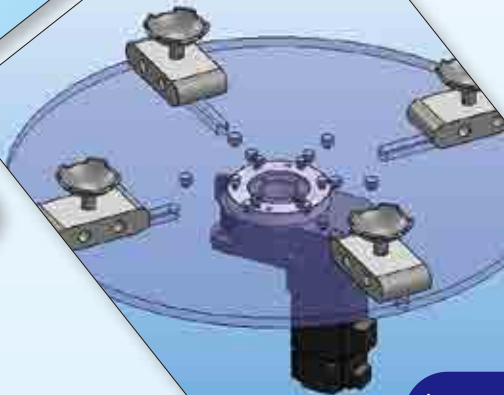
Two-axis Vertical Linked Applications



Hoisting Rotary Positioning Applications



Automated Multi-position Applications



Professional Innovative

YA SERIES



MODEL

YA60F-5- V1

Model

Ratio

Motor Flange

F: Motor-linked Type
R: Two-stage Steering Reduction Type

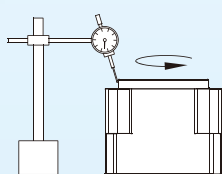
Motor
Frame Size
Reduction Type

Datasheet

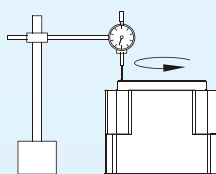
Model		Unit	YA60F	YA60R
Table Diameter		mm	Φ35	Φ35
Through-hole Diameter		mm	Φ20	Φ20
Max. Load	Horizontal	kg	10	10
	Hanging	kg	3	3
	Vertical	kg	3	3
Max. torque		N-m	5	15
Positioning Accuracy		arc-sec	±60"	±60"
Repeatability		arc-sec	≤10"	≤20"
Backlash		arc-sec	≤10	≤20
Reduction Ratio			1/5, 1/10	1/15
Max. Speed of Table		rpm/min	300	200
Allowable Temperature		degrees	-10°C-60°C	-10°C-60°C
Motor		W	100W Servo Motor	100W Servo Motor
Weight		kg	0.75	1.1

*Origin Sensor is optional / Specifications: OMRON EE-SX672

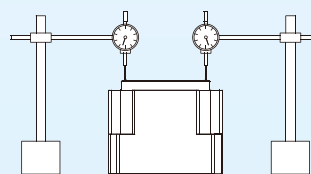
Precision inspection



Concentricity
inspection for table
≤ 0.02

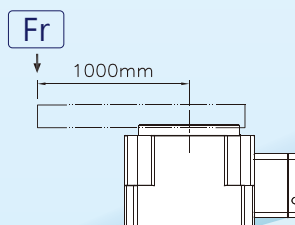
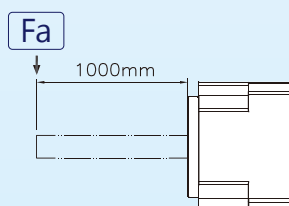


Amplitude of
rotation for table
≤ 0.02



Parallelism for
table and base
≤ 0.02

Allowable load



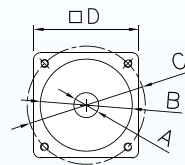
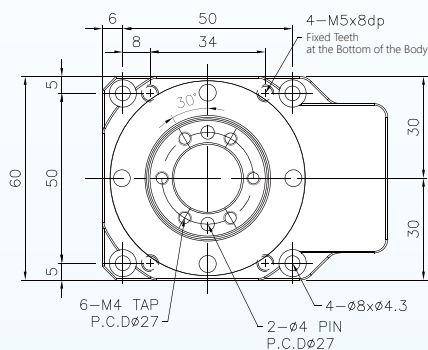
MODEL	Fa(N-m)	Fr(N-m)
YA60F/R	3	3

* If there are special requirements, please inquire individually.

* As our company continues to research and develop, specifications and designs are subject to change without prior notice.

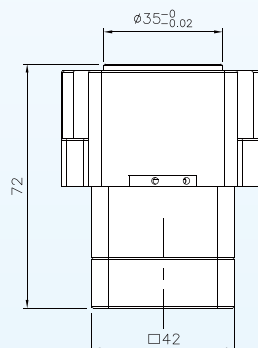
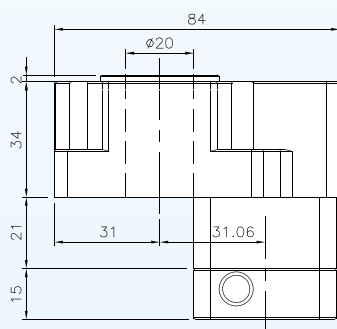
Exterior Dimension Chart

▶ YA60F

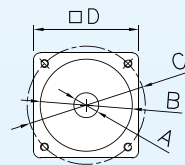
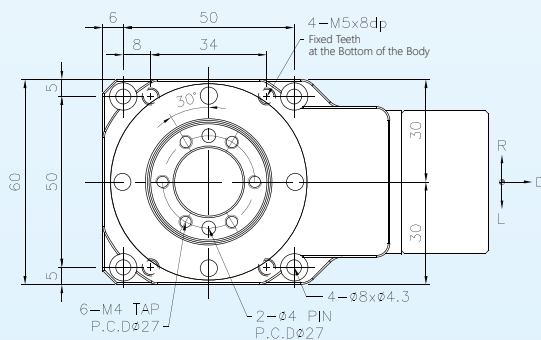


Motor Mounting Hole Parameters

Motor Flange Shaft Size	A Motor Shaft	B Motor Flange	C Motor Mounting Holes	D Motor Frame Size
V1	Φ 8	Φ 30	PCD Φ 45-M3	40
V2	Φ 8	Φ 30	PCD Φ 46-M4	40

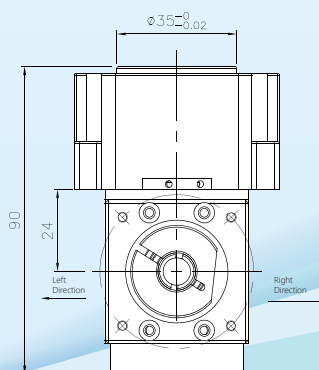
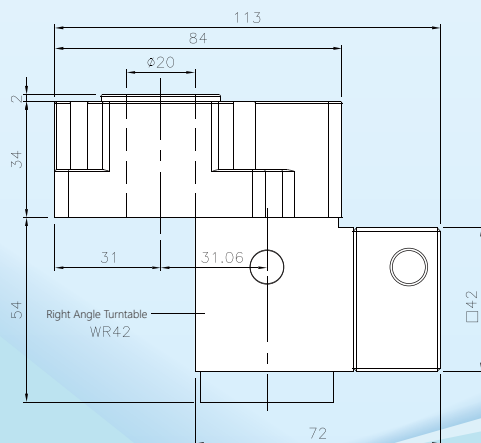


▶ YA60R



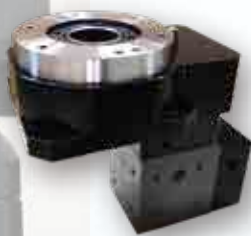
Motor Mounting Hole Parameters

Motor Flange Shaft Size	A Motor Shaft	B Motor Flange	C Motor Mounting Holes	D Motor Frame Size
V1	Φ 8	Φ 30	PCD Φ 45-M3	40
V2	Φ 8	Φ 30	PCD Φ 46-M4	40



*If there are L/R directional requirements, please specify when ordering.

YA SERIES



MODEL

YA100F-8- **V1**

Model

Ratio

Motor Flange

Motor
Frame Size

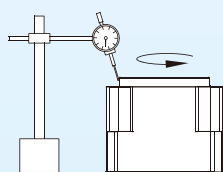
F: Motor-linked Type
R: Two-stage Steering Reduction Type

Datasheet

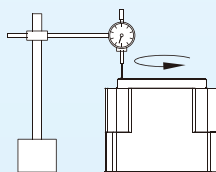
Model		Unit	YA100F	YA100R
Table Diameter		mm	φ95	φ95
Through-hole Diameter		mm	φ29	φ29
Max. Load	Horizontal	kg	50	50
	Hanging	kg	35	35
	Vertical	kg	15	15
Max. torque		N-m	30	45
Positioning Accuracy		arc-sec	±60"	±60"
Repeatability		arc-sec	≤10"	≤20"
Backlash		arc-sec	≤10	≤20
Reduction Ratio			1/8	1/16, 1/24
Max. Speed of Table		rpm/min	250	125
Allowable Temperature		degrees	-10°C-60°C	-10°C-60°C
Motor		W	400W Servo Motor	400W Servo Motor
Weight		kg	2.5	3.7

*Origin Sensor is optional / Specifications: OMRON EE-SX672

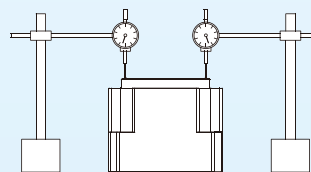
Precision inspection



Concentricity
inspection for table
≤ 0.02

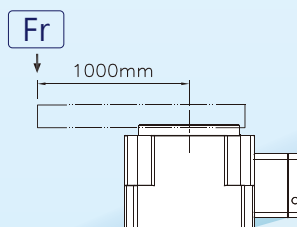
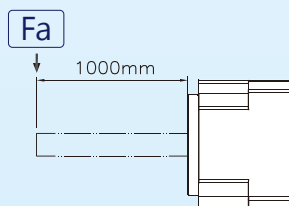


Amplitude of
rotation for table
≤ 0.005



Parallelism for
table and base
≤ 0.02

Allowable load



MODEL	Fa(N-m)	Fr(N-m)
YA100F/R	15	25

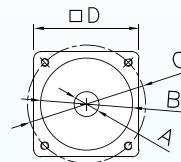
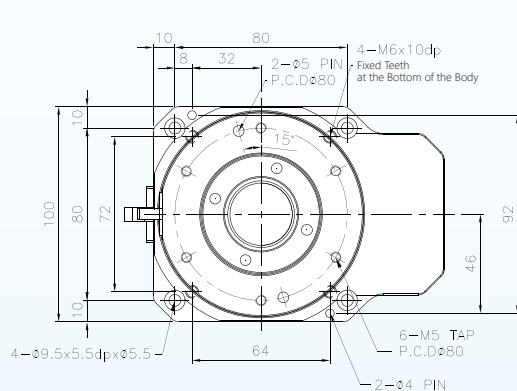
* If there are special requirements, please inquire individually.

* As our company continues to research and develop, specifications and designs are subject to change without prior notice.

YA SERIES

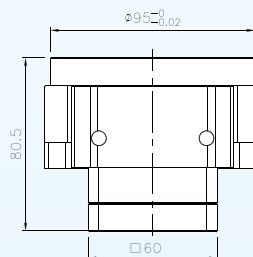
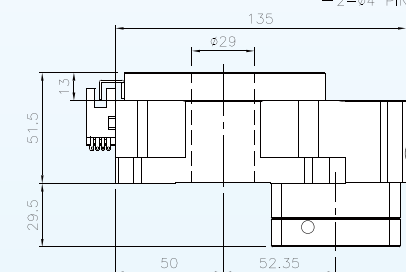
Exterior Dimension Chart

▶ YA100F

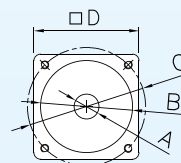
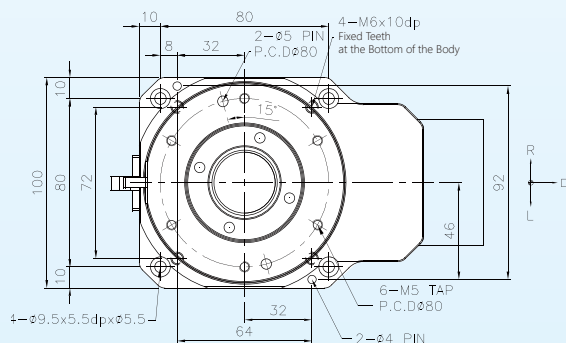


Motor Mounting Hole Parameters

Motor Flange Shaft Size	A Motor Shaft	B Motor Flange	C Motor Mounting Holes	D Motor Frame Size
V1	Φ14	Φ 50	PCD Φ 70-M4	60
V2	Φ14	Φ 50	PCD Φ 70-M5	60

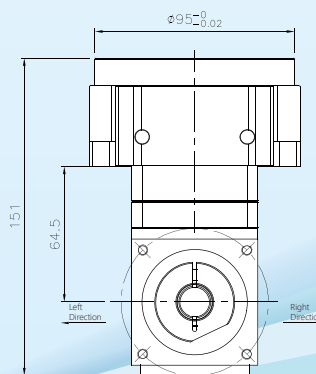
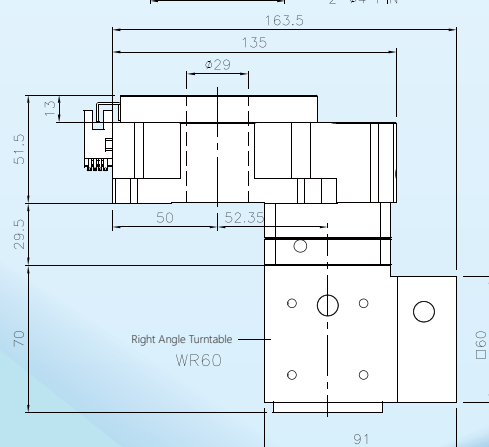


▶ YA100R



Motor Mounting Hole Parameters

Motor Flange Shaft Size	A Motor Shaft	B Motor Flange	C Motor Mounting Holes	D Motor Frame Size
V1	Φ14	Φ 50	PCD Φ 70-M4	60
V2	Φ14	Φ 50	PCD Φ 70-M5	60



*If there are L/R directional requirements, please specify when ordering.

YA SERIES



MODEL

YA130F-10- **V1**

Model

Ratio

Motor
Frame Size

Motor Flange

F: Motor-linked Type

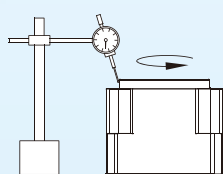
R: Two-stage Steering Reduction Type

Datasheet

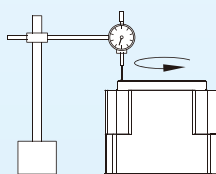
Model		Unit	YA130F	YA130R
Table Diameter		mm	Φ120	Φ120
Through-hole Diameter		mm	Φ40	Φ40
Max. Load	Horizontal	kg	75	75
	Hanging	kg	45	45
	Vertical	kg	30	30
Max. torque		N-m	38	50
Positioning Accuracy		arc-sec	±60"	±60"
Repeatability		arc-sec	≤10"	≤20"
Backlash		arc-sec	≤10	≤20
Reduction Ratio			1/10	1/20, 1/30
Max. Speed of Table		rpm/min	200	100
Allowable Temperature		degrees	-10°C-60°C	-10°C-60°C
Motor		W	400W Servo Motor	400W Servo Motor
Weight		kg	4.5	5.8

*Origin Sensor is optional / Specifications: OMRON EE-SX672

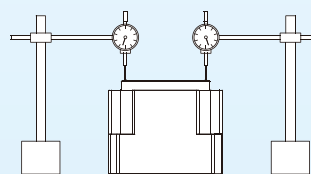
Precision inspection



Concentricity
inspection for table
≤ 0.02

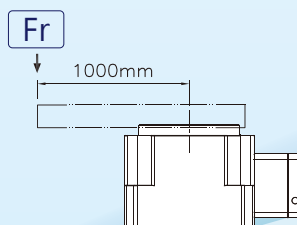
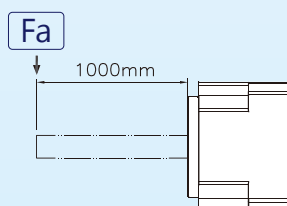


Amplitude of
rotation for table
≤ 0.005



Parallelism for
table and base
≤ 0.02

Allowable load



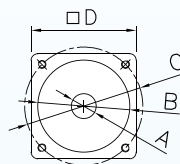
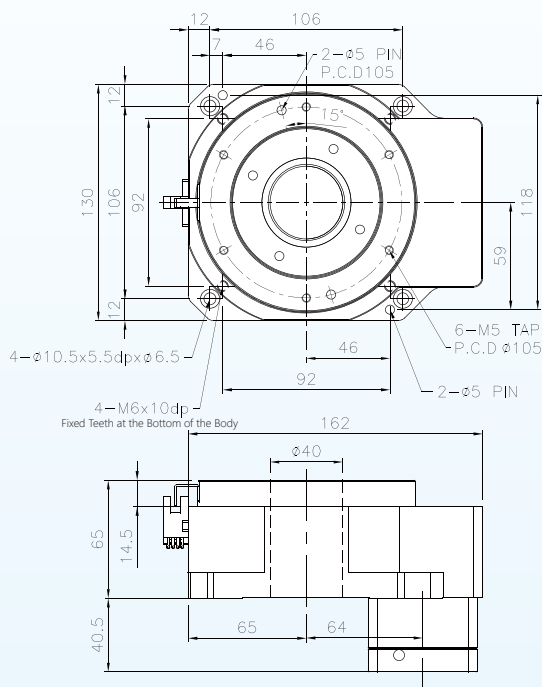
MODEL	Fa(N-m)	Fr(N-m)
YA130F/R	25	45

* If there are special requirements, please inquire individually.

* As our company continues to research and develop, specifications and designs are subject to change without prior notice.

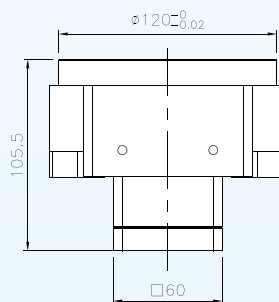
Exterior Dimension Chart

▶ YA130F

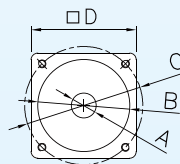
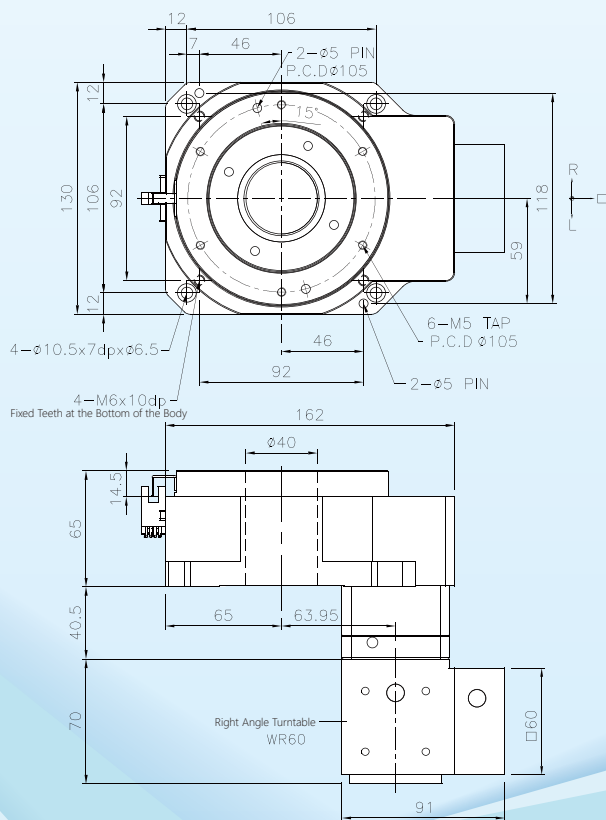


Motor Mounting Hole Parameters

Motor Flange Shaft Size	A Motor Shaft	B Motor Flange	C Motor Mounting Holes	D Motor Frame Size
V1	$\phi 14$	$\phi 50$	PCD $\phi 70$ -M4	60
V2	$\phi 14$	$\phi 50$	PCD $\phi 70$ -M5	60

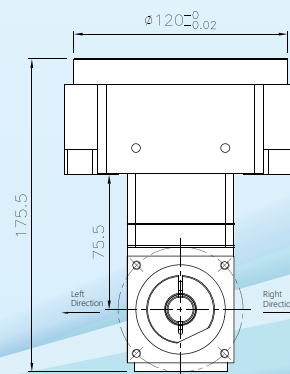


▶ YA130R



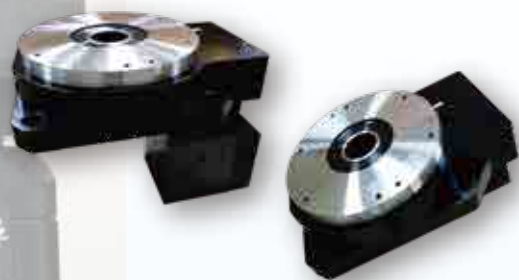
Motor Mounting Hole Parameters

Motor Flange Shaft Size	A Motor Shaft	B Motor Flange	C Motor Mounting Holes	D Motor Frame Size
V1	$\phi 14$	$\phi 50$	PCD $\phi 70$ -M4	60
V2	$\phi 14$	$\phi 50$	PCD $\phi 70$ -M5	60



*If there are L/R directional requirements, please specify when ordering.

YA SERIES



MODEL

YA200F-10- **V1**

Model

Ratio

Motor
Frame Size

Motor Flange

F: Motor-linked Type

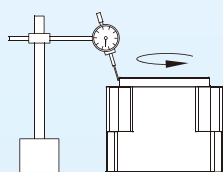
R: Two-stage Steering Reduction Type

Datasheet

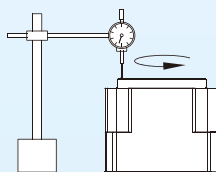
Model		Unit	YA200F	YA200R
Table Diameter		mm	Φ190	Φ190
Through-hole Diameter		mm	Φ40	Φ40
Max. Load	Horizontal	kg	100	100
	Hanging	kg	60	60
	Vertical	kg	45	45
Max. torque		N-m	75	100
Positioning Accuracy		arc-sec	±60"	±60"
Repeatability		arc-sec	≤10"	≤20"
Backlash		arc-sec	≤10	≤20
Reduction Ratio			1/10	1/20, 1/30
Max. Speed of Table		rpm/min	200	100
Allowable Temperature		degrees	-10°C-60°C	-10°C-60°C
Motor		W	750W Servo Motor	750W Servo Motor
Weight		kg	11.7	15.2

*Origin Sensor is optional / Specifications: OMRON EE-SX672

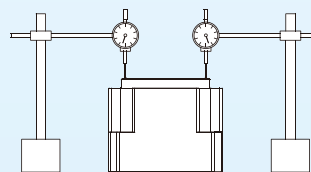
Precision inspection



Concentricity
inspection for table
≤ 0.02

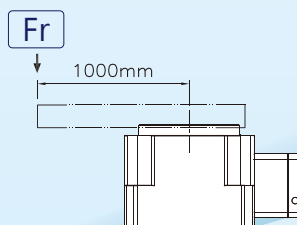
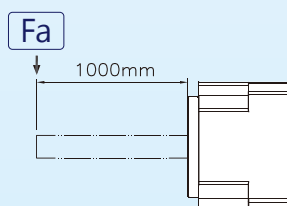


Amplitude of
rotation for table
≤ 0.005



Parallelism for
table and base
≤ 0.02

Allowable load



MODEL	Fa (N-m)	Fr (N-m)
YA200F/R	45	60

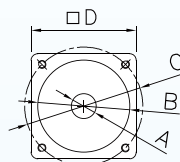
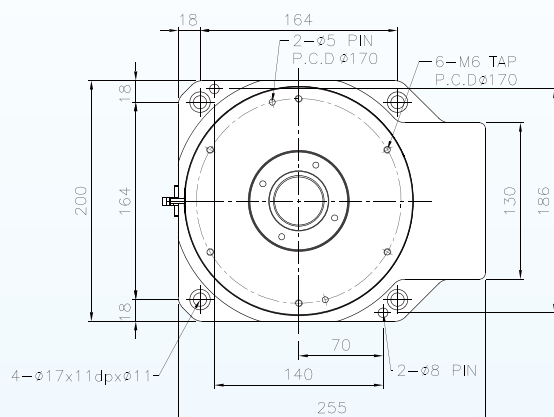
* If there are special requirements, please inquire individually. (Such as encoder)

* As our company continues to research and develop, specifications and designs are subject to change without prior notice.

YA SERIES

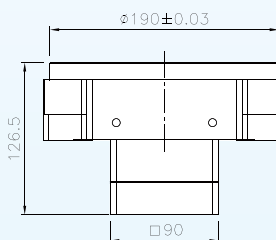
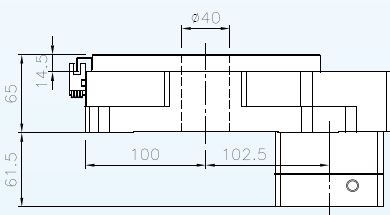
Exterior Dimension Chart

▶ YA200F

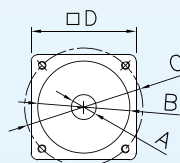
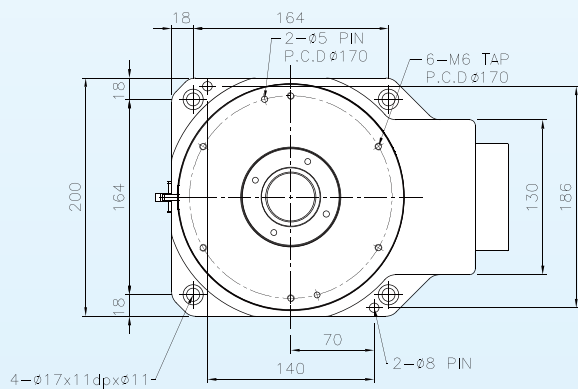


Motor Mounting Hole Parameters

Motor Flange Shaft Size	A Motor Shaft	B Motor Flange	C Motor Mounting Holes	D Motor Frame Size
V1	Φ19	Φ 70	PCDΦ 90-M5	80
V2	Φ19	Φ 70	PCDΦ 90-M6	80

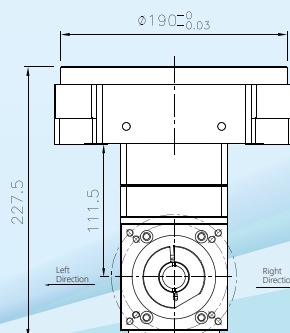
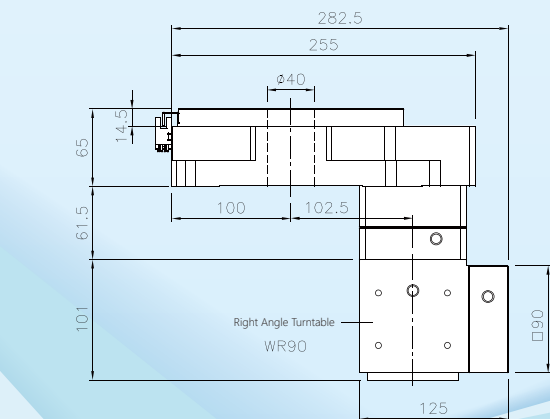


▶ YA200R



Motor Mounting Hole Parameters

Motor Flange Shaft Size	A Motor Shaft	B Motor Flange	C Motor Mounting Holes	D Motor Frame Size
V1	Φ19	Φ 70	PCDΦ 90-M5	80
V2	Φ19	Φ 70	PCDΦ 90-M6	80



*If there are L/R directional requirements, please specify when ordering.

YA SERIES



MODEL

YA275F-10- **V1**

Model

Ratio

Motor
Frame Size

Motor Flange

F: Motor-linked Type

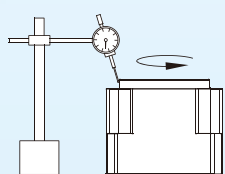
R: Two-stage Steering Reduction Type

Datasheet

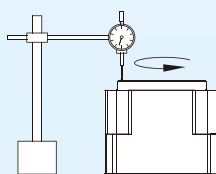
Model		Unit	YA275F	YA275R
Table Diameter		mm	Φ190	Φ190
Through-hole Diameter		mm	Φ75	Φ75
Max. Load	Horizontal	kg	150	150
	Hanging	kg	75	75
	Vertical	kg	50	50
Max. torque		N-m	75	100
Positioning Accuracy		arc-sec	±60"	±60"
Repeatability		arc-sec	≤10"	≤20"
Backlash		arc-sec	≤10	≤20
Reduction Ratio			1/10	1/20, 1/30
Max. Speed of Table		rpm/min	200	100
Allowable Temperature		degrees	-10°C-60°C	-10°C-60°C
Motor		W	750W Servo Motor	750W Servo Motor
Weight		kg	15	19.5

*Origin Sensor is optional / Specifications: OMRON EE-SX672

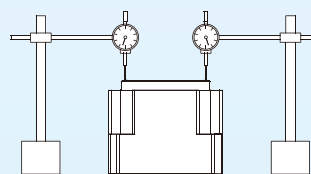
Precision inspection



Concentricity
inspection for table
≤ 0.02

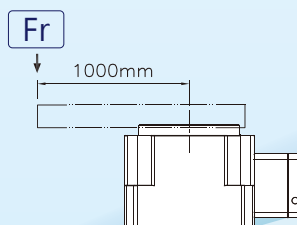
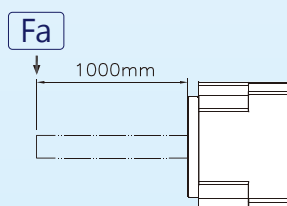


Amplitude of
rotation for table
≤ 0.005



Parallelism for
table and base
≤ 0.02

Allowable load



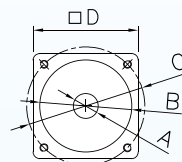
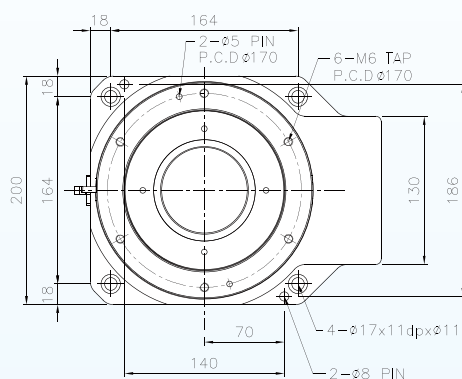
MODEL	Fa(N-m)	Fr(N-m)
YA275F/R	50	75

* If there are special requirements, please inquire individually.

* As our company continues to research and develop, specifications and designs are subject to change without prior notice.

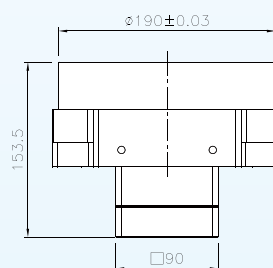
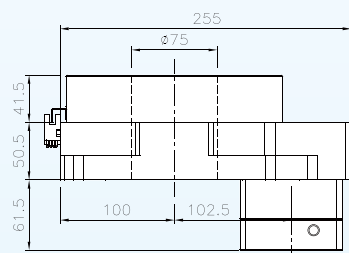
Exterior Dimension Chart

▶ YA275F

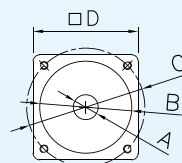
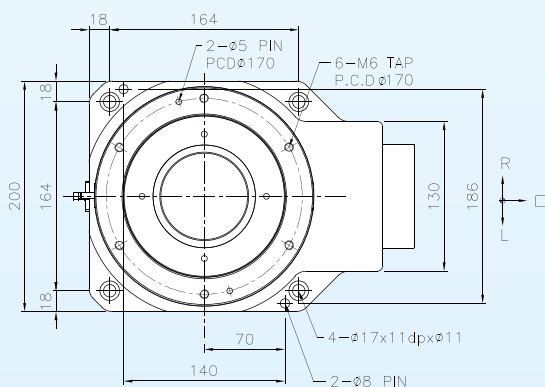


Motor Mounting Hole Parameters

Motor Flange Shaft Size	A Motor Shaft	B Motor Flange	C Motor Mounting Holes	D Motor Frame Size
V1	ø19	ø 70	PCD ø 90-M5	80
V2	ø19	ø 70	PCD ø 90-M6	80

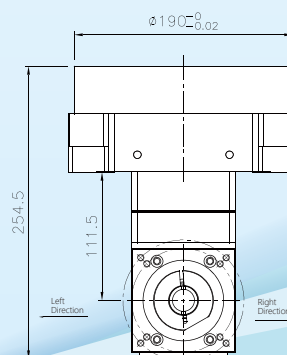
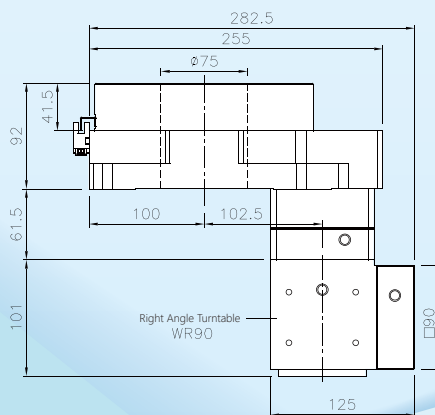


▶ YA275R



Motor Mounting Hole Parameters

Motor Flange Shaft Size	A Motor Shaft	B Motor Flange	C Motor Mounting Holes	D Motor Frame Size
V1	ø19	ø 70	PCD ø 90-M5	80
V2	ø19	ø 70	PCD ø 90-M6	80



*If there are L/R directional requirements, please specify when ordering.

MA SERIES



MODEL

MA85F-10- **V1**

Model

Ratio

Motor
Frame Size

Motor Flange

F: Motor-linked Type

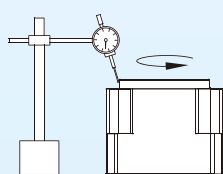
R: Two-stage Steering Reduction Type

Datasheet

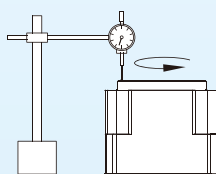
Model		Unit	MA85F	MA85R-42/60
Table Diameter		mm	Φ 70	Φ 70
Through-hole Diameter		mm	Φ33	Φ33
Max. Load	Horizontal	kg	50	50
	Hanging	kg	30	30
	Vertical	kg	15	15
Max. torque		N-m	15	40
Positioning Accuracy		arc-sec	±60"	±60"
Repeatability		arc-sec	≤10"	≤20"
Backlash		arc-sec	≤10	≤20
Reduction Ratio			1/10	1/30, 1/18
Max. Speed of Table		rpm/min	300	100
Allowable Temperature		degrees	-10°C-60°C	-10°C-60°C
Motor		W	100.400W Servo Motor	100.400W Servo Motor
Weight		kg	1	1.3 / 2.3

*Origin Sensor is optional / Specifications: OMRON EE-SX672

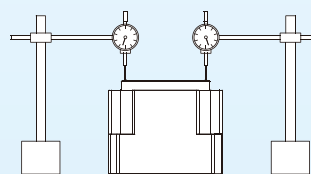
Precision inspection



Concentricity
inspection for table
≤ 0.02

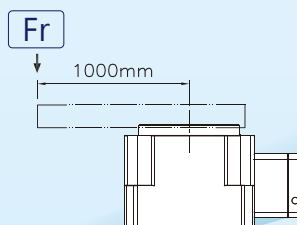
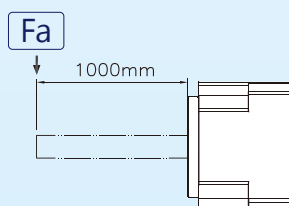


Amplitude of
rotation for table
≤ 0.01



Parallelism for
table and base
≤ 0.02

Allowable load



MODEL	Fa(N-m)	Fr(N-m)
MA85F/R	10	25

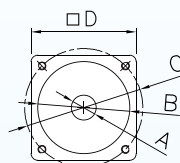
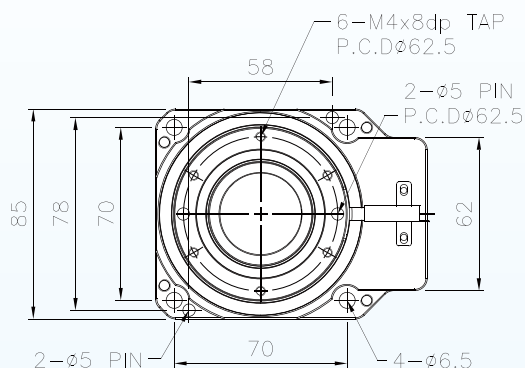
* If there are special requirements, please inquire individually.

* As our company continues to research and develop, specifications and designs are subject to change without prior notice.

MA SERIES

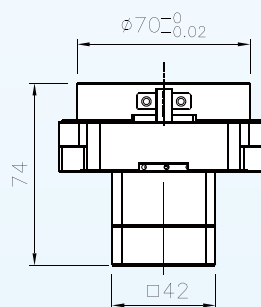
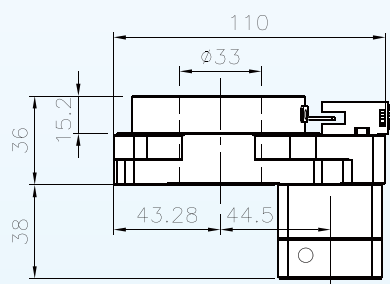
Exterior Dimension Chart

▶ MA85F-42

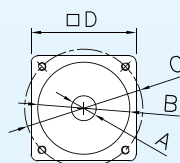
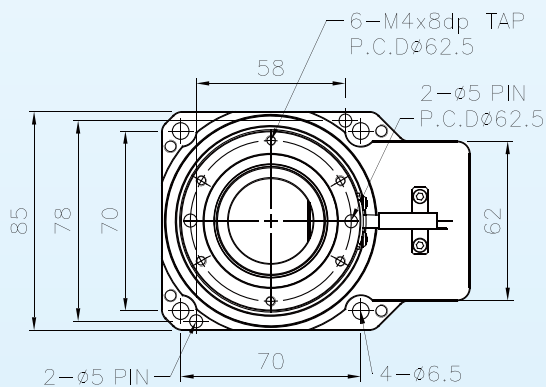


Motor Mounting
Hole Parameters

Motor Flange Shaft Size	A Motor Shaft	B Motor Flange	C Motor Mounting Holes	D Motor Frame Size
V1	ø 8	ø 30	PCDø 45-M3	40
V2	ø 8	ø 30	PCDø 46-M4	40

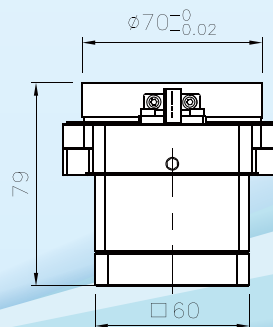
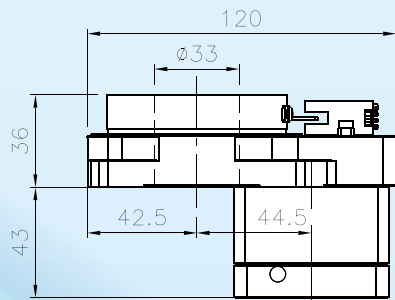


▶ MA85F-60



Motor Mounting
Hole Parameters

Motor Flange Shaft Size	A Motor Shaft	B Motor Flange	C Motor Mounting Holes	D Motor Frame Size
V1	ø 14	ø 50	PCDø 70-M4	60
V2	ø 14	ø 50	PCDø 70-M5	60

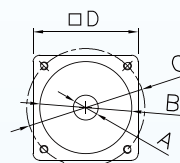
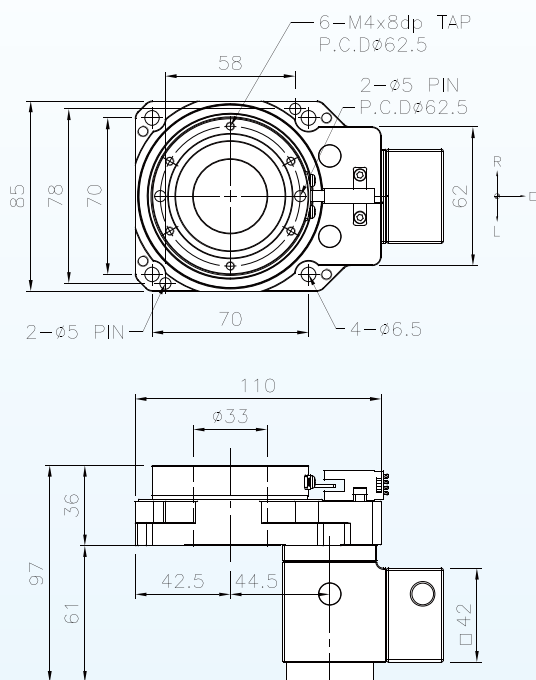


*If there are L/R directional requirements, please specify when ordering.

MA SERIES

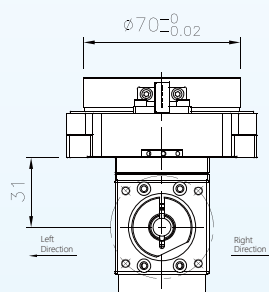
Exterior Dimension Chart

▶ MA85R-42

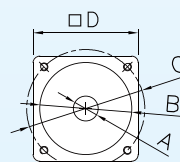
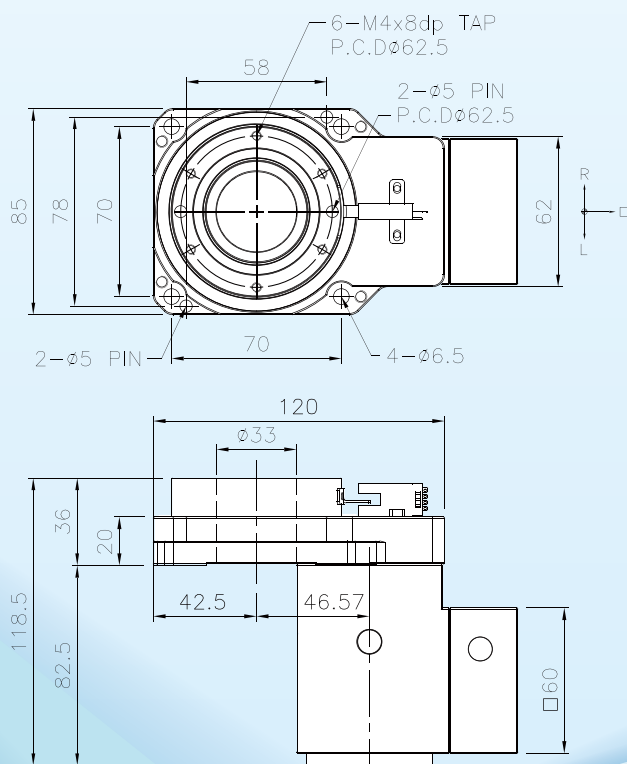


Motor Mounting Hole Parameters

Motor Flange Shaft Size	A Motor Shaft	B Motor Flange	C Motor Mounting Holes	D Motor Frame Size
V1	$\phi 8$	$\phi 30$	PCD $\phi 45$ -M3	40
V2	$\phi 8$	$\phi 30$	PCD $\phi 46$ -M4	40

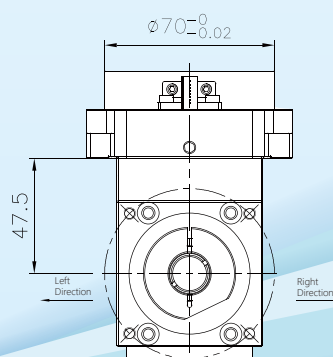


▶ MA85R-60



Motor Mounting Hole Parameters

Motor Flange Shaft Size	A Motor Shaft	B Motor Flange	C Motor Mounting Holes	D Motor Frame Size
V1	$\phi 14$	$\phi 50$	PCD $\phi 70$ -M4	60
V2	$\phi 14$	$\phi 50$	PCD $\phi 70$ -M5	60



*If there are L/R directional requirements, please specify when ordering.

MA SERIES



MODEL

MA130F-10- **V1**

Model

Ratio

Motor Flange

F: Motor-linked Type
R: Two-stage Steering Reduction Type

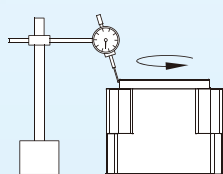
Motor
Frame Size

Datasheet

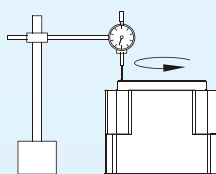
Model		Unit	MA130F	MA130R
Table Diameter		mm	Φ114	Φ114
Through-hole Diameter		mm	Φ62	Φ62
Max. Load	Horizontal	kg	75	75
	Hanging	kg	50	50
	Vertical	kg	25	25
Max. torque		N-m	38	70
Positioning Accuracy		arc-sec	±60"	±60"
Repeatability		arc-sec	≤10"	≤20"
Backlash		arc-sec	≤10	≤20
Reduction Ratio			1/10	1/18
Max. Speed of Table		rpm/min	300	160
Allowable Temperature		degrees	-10°C-60°C	-10°C-60°C
Motor		W	400W Servo Motor	400W Servo Motor
Weight		kg	2.5	3.5

*Origin Sensor is optional / Specifications: OMRON EE-SX672

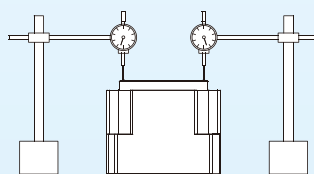
Precision inspection



Concentricity
inspection for table
≤ 0.02

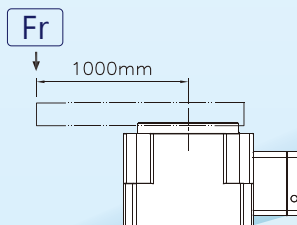
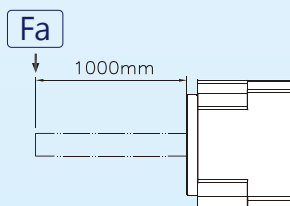


Amplitude of
rotation for table
≤ 0.01



Parallelism for
table and base
≤ 0.02

Allowable load



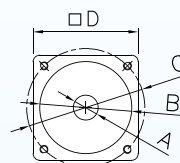
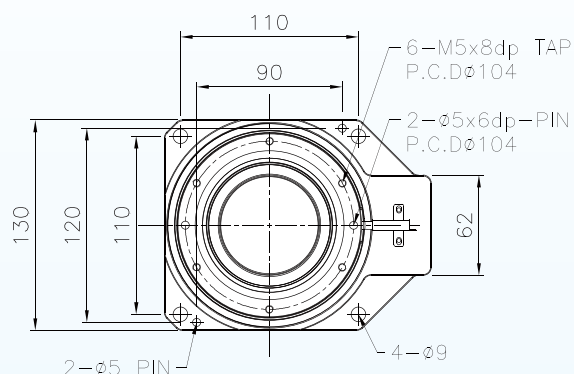
MODEL	Fa (N-m)	Fr (N-m)
MA130F/R	20	40

* If there are special requirements, please inquire individually.

* As our company continues to research and develop, specifications and designs are subject to change without prior notice.

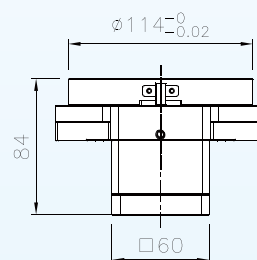
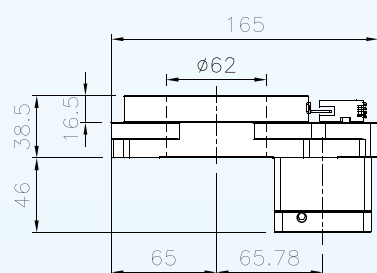
Exterior Dimension Chart

▶ MA130F

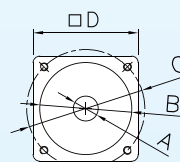
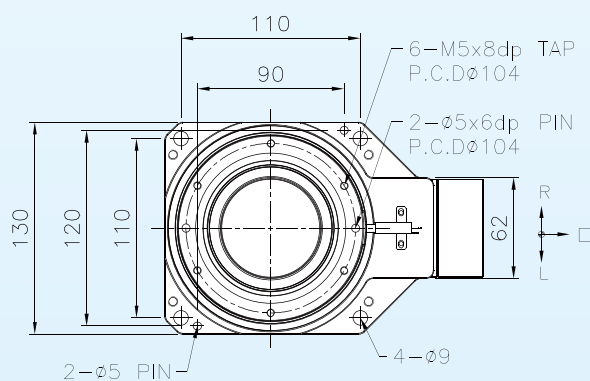


Motor Mounting Hole Parameters

Motor Flange Shaft Size	A Motor Shaft	B Motor Flange	C Motor Mounting Holes	D Motor Frame Size
V1	Φ14	Φ 50	PCD Φ 70-M4	60
V2	Φ14	Φ 50	PCD Φ 70-M5	60

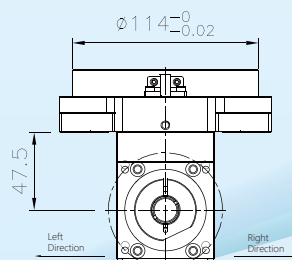
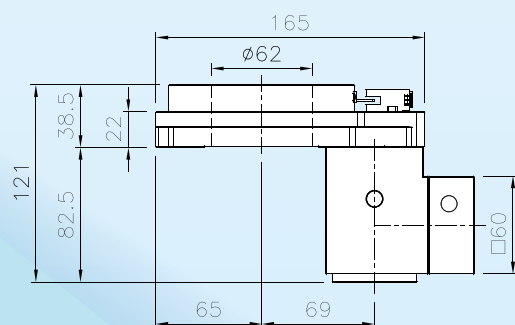


▶ MA130R



Motor Mounting Hole Parameters

Motor Flange Shaft Size	A Motor Shaft	B Motor Flange	C Motor Mounting Holes	D Motor Frame Size
V1	Φ14	Φ 50	PCD Φ 70-M4	60
V2	Φ14	Φ 50	PCD Φ 70-M5	60



*If there are L/R directional requirements, please specify when ordering.

MA SERIES



MODEL

MA200R-18- **V1**

Model

Ratio

Motor
Frame Size

Motor Flange

F: Motor-linked Type

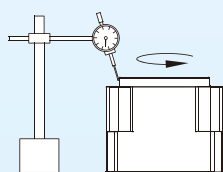
R: Two-stage Steering Reduction Type

Datasheet

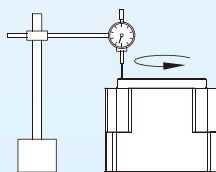
Model		Unit	MA200R
Table Diameter		mm	Φ 70
Through-hole Diameter		mm	Φ 100
Max. Load	Horizontal	kg	100
	Hanging	kg	70
	Vertical	kg	35
Max. torque		N-m	110
Positioning Accuracy		arc-sec	±60"
Repeatability		arc-sec	≤20"
Backlash		arc-sec	≤20
Reduction Ratio			1/18
Max. Speed of Table		rpm/min	160
Allowable Temperature		degrees	-10°C-60°C
Motor		W	750W Servo Motor
Weight		kg	11.5

*Origin Sensor is optional / Specifications: OMRON EE-SX672

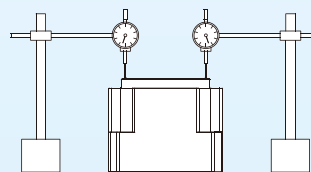
Precision inspection



Concentricity
inspection for table
≤ 0.02

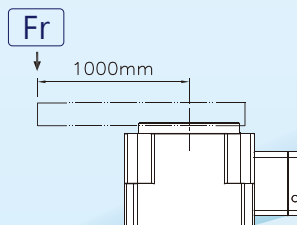
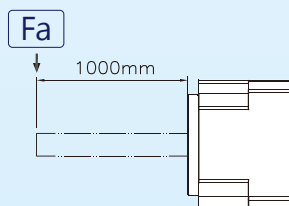


Amplitude of
rotation for table
≤ 0.01



Parallelism for
table and base
≤ 0.02

Allowable load



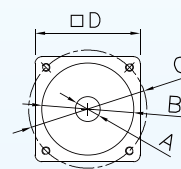
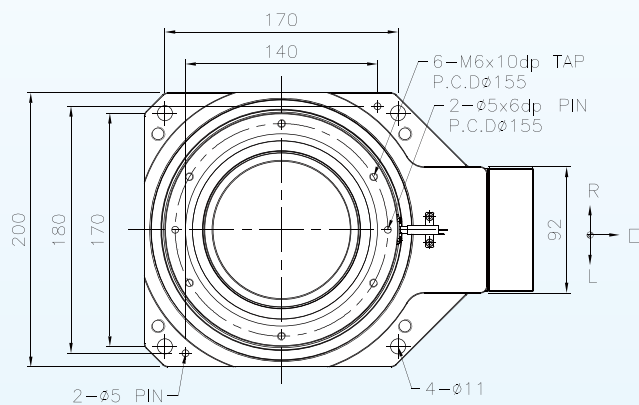
MODEL	Fa (N-m)	Fr (N-m)
MA200R	40	50

* If there are special requirements, please inquire individually.

* As our company continues to research and develop, specifications and designs are subject to change without prior notice.

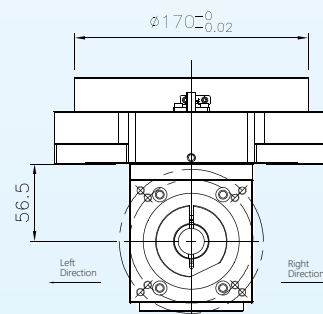
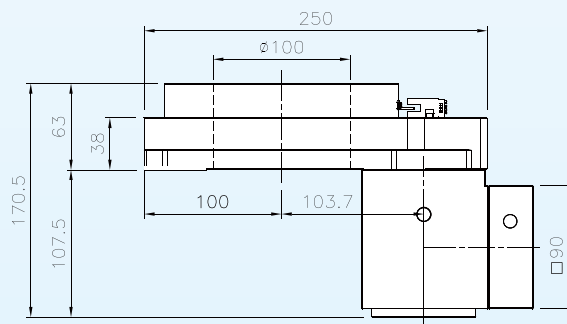
Exterior Dimension Chart

▶ MA200R



Motor Mounting Hole Parameters

Motor Flange Shaft Size	A Motor Shaft	B Motor Flange	C Motor Mounting Holes	D Motor Frame Size
V1	Φ19	Φ 70	PCDΦ 90-M5	80
V2	Φ19	Φ 70	PCDΦ 90-M6	80



*If there are L/R directional requirements, please specify when ordering.



MODEL

BR42-3-



V1

Model

Ratio

Motor

Frame Size

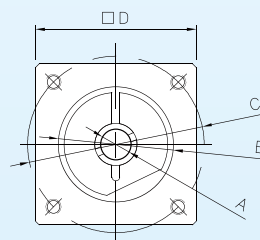
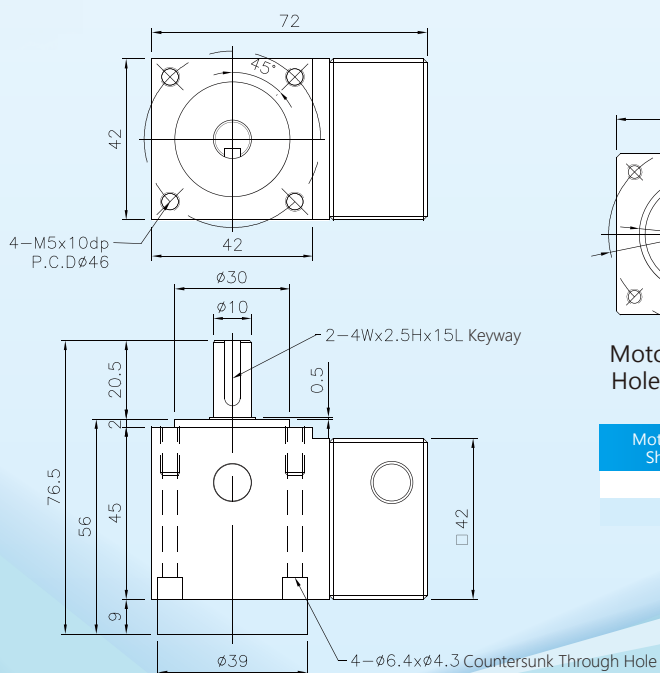
Motor Flange

Datasheet

Model	Unit	BR42	BR60	BR90
Max. Speed of Table	rpm/min	3000	3000	3000
Max. torque	N-m	20	30	45
Repeatability	arc-sec	≤60	≤60	≤60
Backlash	arc-sec	≤60	≤60	≤60
Permissible Radial Force (Fw)	N	100	250	350
Permissible Axial Force (Fr)	N	50	100	150
Reduction Ratio		1/3	1/2, 1/3	1/2, 1/3
Allowable Temperature	degrees	-10°C-60°C	-10°C-60°C	-10°C-60°C
Motor	W	100W Servo Motor	400W Servo Motor	750W Servo Motor
Weight	kg	0.5	1.2	3.5

Exterior Dimension Chart

▶ BR42

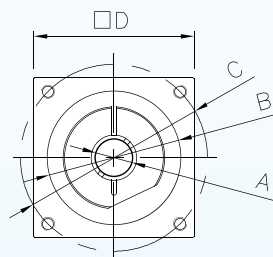
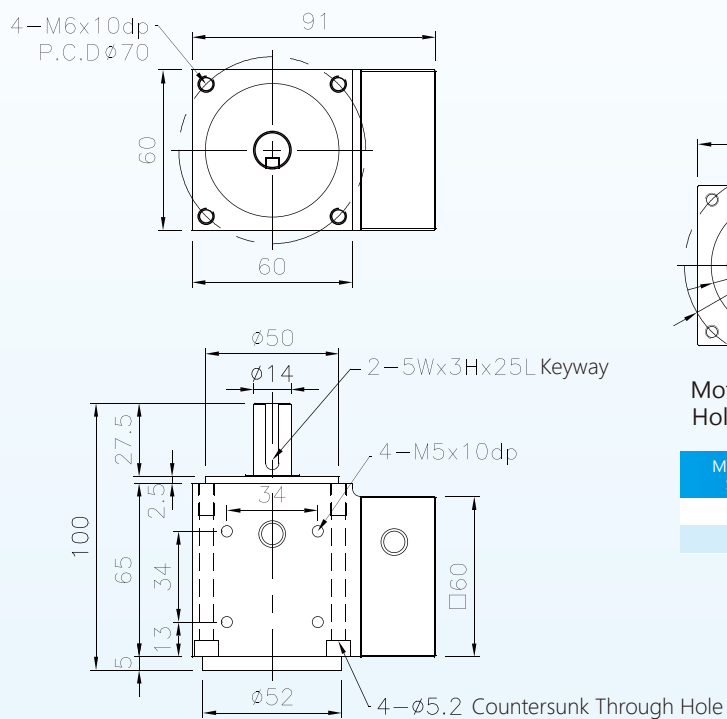


Motor Mounting Hole Parameters

Motor Flange Shaft Size	A Motor Shaft	B Motor Flange	C Motor Mounting Holes	D Motor Frame Size
V1	Φ 8	Φ 30	PCD Φ 45-M3	40
V2	Φ 8	Φ 30	PCD Φ 46-M4	40

Exterior Dimension Chart

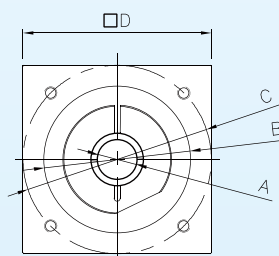
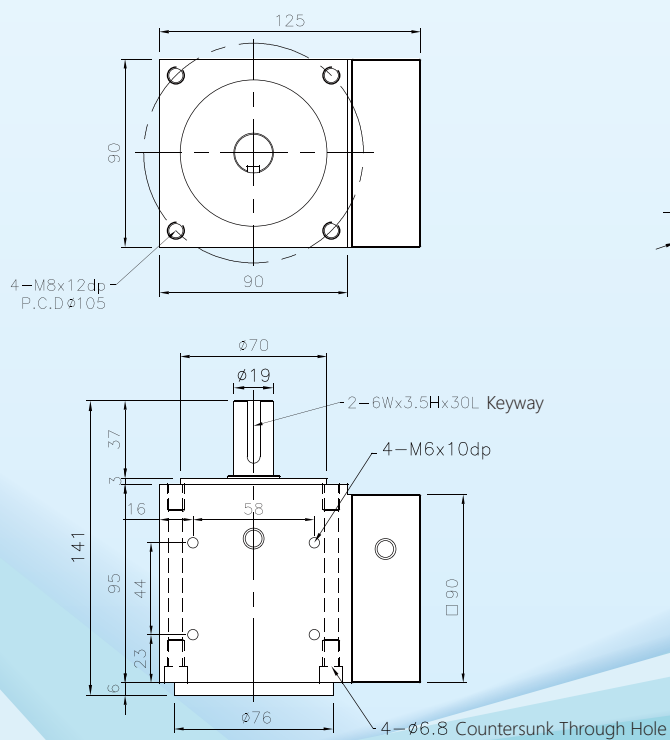
► BR60



Motor Mounting Hole Parameters

Motor Flange Shaft Size	A Motor Shaft	B Motor Flange	C Motor Mounting Holes	D Motor Frame Size
V1	$\phi 14$	$\phi 50$	PCD $\phi 70$ -M4	60
V2	$\phi 14$	$\phi 50$	PCD $\phi 70$ -M5	60

► BR90



Motor Mounting Hole Parameters

Motor Flange Shaft Size	A Motor Shaft	B Motor Flange	C Motor Mounting Holes	D Motor Frame Size
V1	$\phi 19$	$\phi 70$	PCD $\phi 90$ -M5	80
V2	$\phi 19$	$\phi 70$	PCD $\phi 90$ -M6	80

■ NOTES

This image shows a full page of white paper with horizontal ruling lines. The lines are evenly spaced and extend across the width of the page. At the bottom of the page, there is a decorative graphic consisting of several overlapping, semi-transparent blue shapes that create a wavy, layered effect, resembling stylized water or fabric folds. The overall design is clean and minimalist, typical of a notebook or a template for writing.

▶ Japanese Core ▶ Taiwan Assembly ▶ Quality Assurance

All Series

**YH 4-axis series**

CNC Machining Center Rotary 4-axis
Specifications X-axis 350-1400mm

**RHD series**

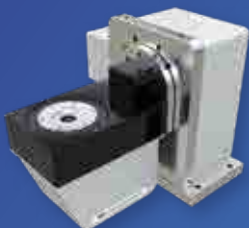
High precision, high rigidity, high inertia
Digital Control Rotary Positioning Table

**YHC 5-axis series**

CNC Machining Center Rotary 5-axis
Specifications X-axis 500-1400mm

**SHD series**

Waterproof, Corrosion-resistant,
Pollution-resistant
Optimal Choice CNC Rotary Platform

**YHD series**

Five-axis Interlinked Surface Processing
High Precision Two-dimensional Rotary
Motion Module

**YRD series**

High Self-locking Force. High Precision.
Lightweight
Optimal Multi-functional CNC Rotary
Platform

**YHR series**

Automation, Dustproof, Waterproof,
Pollution-resistant
Light-duty Two-dimensional Rotary
Motion Module

**Disc / Quill Type
Tailstock**

Diversification, Versatility, Multifunction-
ality
Customizable according to customer
requirements

@013zzkal**WECHAT****MANUFACTURER****禾寶機械有限公司****HER BAO MACHINERY CO.,LTD.**

Address: 1F., No. 10-59, Yuangang, 2nd Neighborhood,
Yuangang Vil., Yuanli Township, Miaoli County, Taiwan
TEL: 037-865907
FAX: 037-867760

Mainland China Operations Center**MESO Automatic (ShangHai) CO.,LTD**

Address: Room 101, Building 10, Lane 3029,
Huaxu Road, Qingpu District, Shanghai
TEL: 021-59761951 / 021-59761605