



# MDR/MDC Series

# HER BAO MACHINERY

Two-dimensional Rotary  
Motion Module

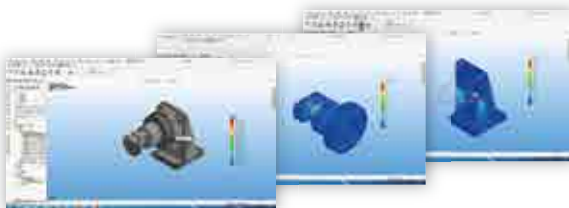
**Achieves Five-axis Linked  
Curved Surface Processing**



# Product Introduction

YAMAHIRO specializes in multi-axis machining based on years of experience in four-axis and five-axis machining centers. We develop outstanding products for various industries, enhance application technology, and establish stable quality to meet international demands.

## Rigorous design, precise product analysis



## Precision manufacturing



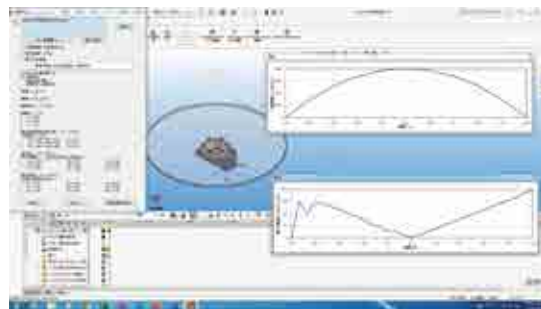
ISO quality assurance



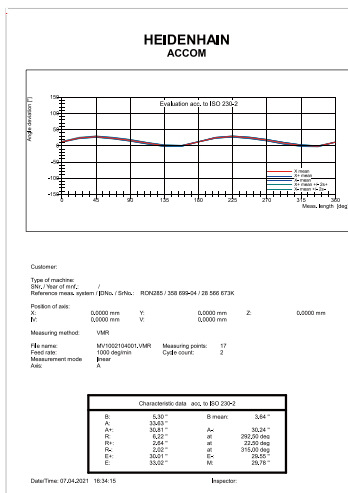
## Precision assembly



## Product application SIM analysis



## Final product inspection



# Precision Manufacturing Striving for Excellence



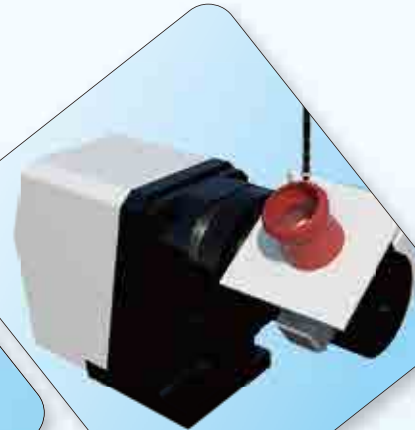
# Two-dimensional Rotary Motion Module Achieves Five-axis Linked Curved Surface Processing

MDR85 MDR65 MDR60 MDR40

Glue Dispensing Machine  
Polishing Machine Applications



3D Printing Applications



Assembly  
Machining Applications



CCD Inspection Applications



**Professional Innovative**



## MDR40-100-

V1

V1

Motor Frame  
for Axis A

Motor Flange  
for Axis A

Motor Frame Size  
for Axis B

Motor Flange  
for Axis B

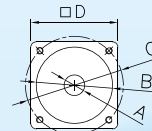


Model		Unit	MDR40-100	MDR60-140	MDR65-140	MDR85-123
Max. Load		kg	3	3	6	15
Max. torque		N-m	5	6	6	10
Rotation Angle	Axis A	Degrees of Angle	±95°	±95°	±95°	±95°
	Axis B		360°	360°	360°	360°
Rotation Precision		mm	≤0.02	≤0.02	≤0.02	≤0.02
Repeatability	Axis A	mm	≤0.005	≤0.005	≤0.005	≤0.005
	Axis B		≤0.005	≤0.005	≤0.005	≤0.005
Rotation Radius		mm	90	130	130	120
2-dimensional Concentricity		mm	≤0.02	≤0.02	≤0.02	≤0.02
2-dimensional Parallelism		mm	≤0.02	≤0.02	≤0.02	≤0.02
Table Rotation Vibration		mm	≤0.01	≤0.01	≤0.01	≤0.01
Reduction Ratio	Axis A		1/10	1/8	1/8	1/10, 1/18
	Axis B		1/10, 1/5	1/10, 1/5	1/10	1/10
Max. Speed of Table		rpm/min	200	200	200	200
Rotation Center Height		mm	95	135	135	123
Motor	Axis A	W	100/200W Servo Motor	200/400W Servo Motor	200/400W Servo Motor	400W Servo Motor
	Axis B		100W Servo Motor	100W Servo Motor	100W Servo Motor	200/400W Servo Motor
Weight		kg	5.5	8.5	9	11

\* As our company continues to research and develop, specific

▶ MDR40-100

## MDR Series Exterior Dimension Chart



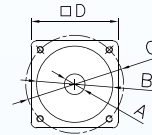
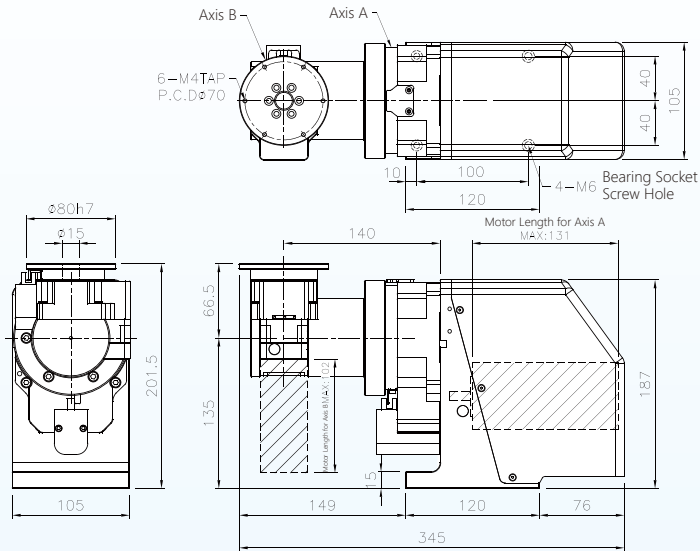
### Motor Mounting Hole Parameters

Motor Flange Shaft Size		A Motor Shaft	B Motor Flange	C Motor Mounting Holes	D Motor Frame Size
Axis A	V1	Φ14	Φ50	PCD Φ70-M4	60
	V2	Φ14	Φ50	PCD Φ70-M5	60
Axis A	V1	Φ 8	Φ30	PCD Φ45-M3	40
	V2	Φ 8	Φ30	PCD Φ45-M4	40
Axis B	V1	Φ 8	Φ30	PCD Φ45-M3	40
	V2	Φ 8	Φ30	PCD Φ45-M4	40



## MDR Series Exterior Dimension Chart

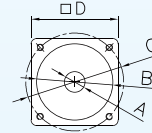
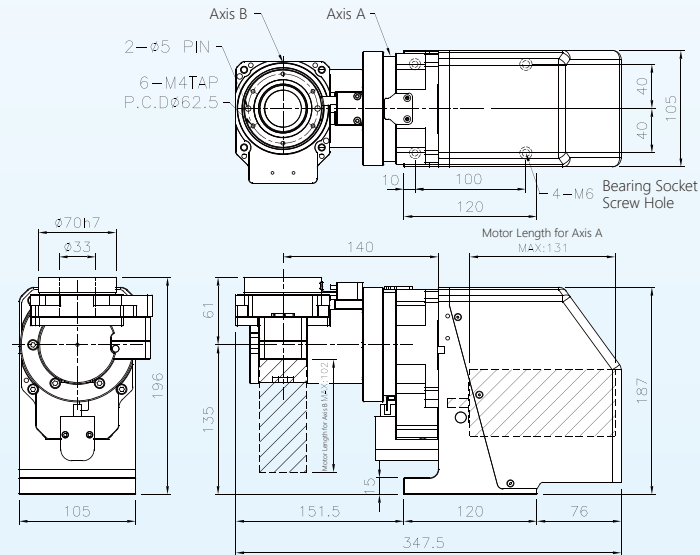
▶ **MDR60-140**



### Motor Mounting Hole Parameters

Motor Flange Shaft Size		A Motor Shaft	B Motor Flange	C Motor Mounting Holes	D Motor Frame Size
Axis A	V1	Φ14	Φ50	PCDΦ70-M4	60
	V2	Φ14	Φ50	PCDΦ70-M5	60
Axis B	V1	Φ 8	Φ30	PCDΦ45-M3	40
	V2	Φ 8	Φ30	PCDΦ45-M4	40

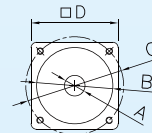
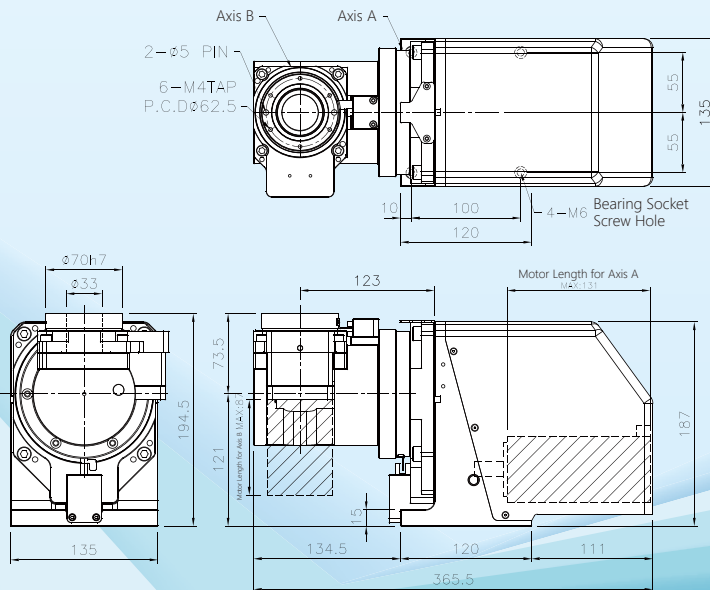
▶ MDR65-140



### Motor Mounting Hole Parameters

Motor Flange Shaft Size		A Motor Shaft	B Motor Flange	C Motor Mounting Holes	D Motor Frame Size
Axis A	V1	Φ14	Φ50	PCDΦ70-M4	60
	V2	Φ14	Φ50	PCDΦ70-M5	60
Axis B	V1	Φ 8	Φ30	PCDΦ45-M3	40
	V2	Φ 8	Φ30	PCDΦ45-M4	40

▶ MDR85-123



### Motor Mounting Hole Parameters

Motor Flange Shaft Size		A Motor Shaft	B Motor Flange	C Motor Mounting Holes	D Motor Frame Size
Axis A	V1	Φ14	Φ50	PCDΦ70-M4	60
	V2	Φ14	Φ50	PCDΦ70-M5	60
Axis B	V1	Φ14	Φ50	PCDΦ70-M4	60
	V2	Φ14	Φ50	PCDΦ70-M5	60



# MDA SERIES

## MODEL

MDA100-140-   **V1**   **V1**

Model

Motor Frame Size  
for Axis A

Motor Flange  
for Axis A

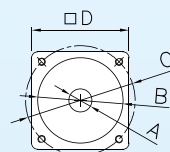
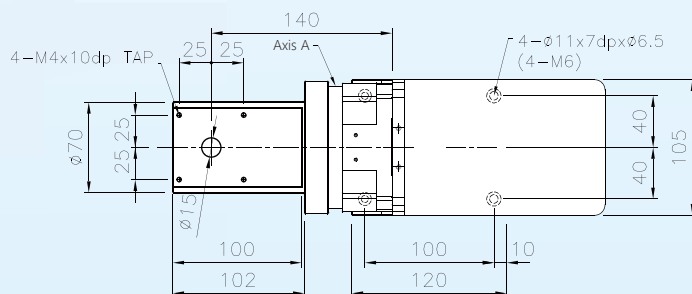
Motor Frame Size  
for Axis B

Motor Flange  
for Axis B

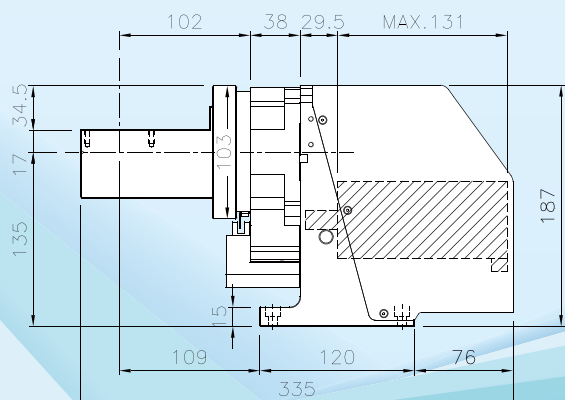
## MDA Series Datasheet

Model	Unit	MDA100-140
Max. Load	kg	3
Max. torque	N-m	5
Rotation Angle	Degrees of Angle	±95°
Rotation Precision	mm	≤0.02
Repeatability	mm	≤0.005
Rotation Radius	mm	125
2-dimensional Concentricity	mm	≤0.02
2-dimensional Parallelism	mm	≤0.02
Table Rotation Vibration	mm	≤0.01
Reduction Ratio		1/8
Max. Speed of Table	rpm/min	200
Rotation Center Height	mm	135
Motor	W	400W Servo Motor
Weight	kg	5

## MDA Series Exterior Dimension Chart



Motor Mounting  
Hole Parameters



Motor Flange Shaft Size	A Motor Shaft	B Motor Flange	C Motor Mounting Holes	D Motor Frame Size
V1	Φ14	Φ 50	PCD Φ 70-M4	60
V2	Φ14	Φ 50	PCD Φ 70-M5	60



## MODEL

MDC100-210-   V1   V1

Model

Motor Frame Size  
for Axis A

Motor Flange  
for Axis A

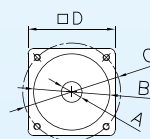
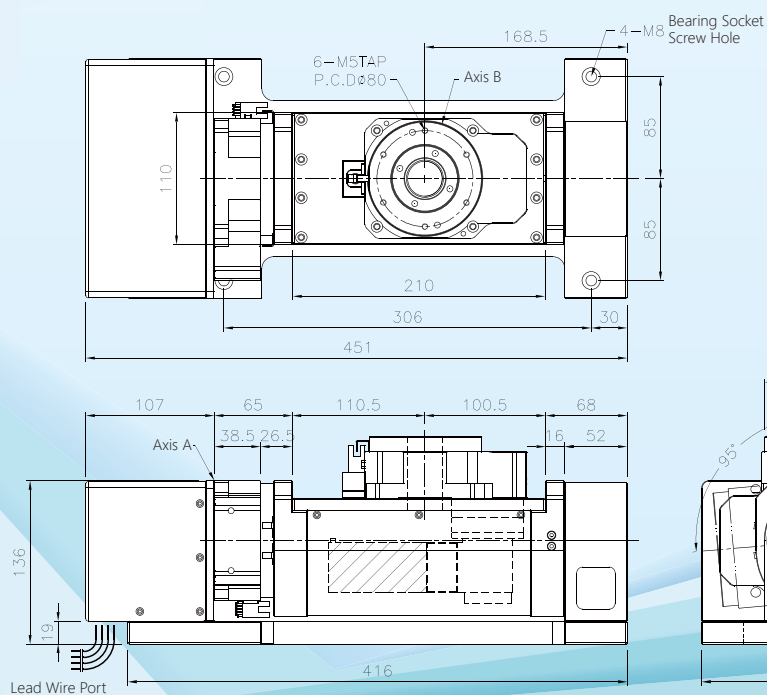
Motor Frame Size  
for Axis B

Motor Flange  
for Axis B

## MDC Series Datasheet

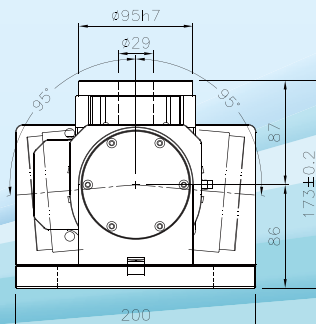
Model		Unit	MDC100-210
Max. Load		kg	15
Max. torque		N-m	30
Rotation Angle	Axis A	Degrees of Angle	±95°
	Axis B		360°
Rotation Precision		mm	≤0.02
Repeatability	Axis A	mm	≤0.005
	Axis B		≤0.005
Rotation Radius		mm	200
2-dimensional Concentricity		mm	≤0.02
2-dimensional Parallelism		mm	≤0.02
Table Rotation Vibration		mm	≤0.01
Reduction Ratio	Axis A		1/24
	Axis B		1/24
Max. Speed of Table		rpm/min	200
Rotation Center Height		mm	86
Motor	Axis A	W	200/400W Servo Motor
	Axis B		100W Servo Motor
Weight		kg	16

## MDC Series Exterior Dimension Chart



Motor Mounting Hole Parameters

Motor Flange Shaft Size		A Motor Shaft	B Motor Flange	C Motor Mounting Holes	D Motor Frame Size
Axis A	V1	Φ14	Φ50	PCDΦ70-M4	60
	V2	Φ14	Φ50	PCDΦ70-M5	60
Axis B	V1	Φ8	Φ30	PCDΦ45-M3	40
	V2	Φ8	Φ30	PCDΦ45-M4	40





► **Japanese Core** ► **Taiwan Assembly** ► **Quality Assurance**

## All Series



### YH 4-axis series

CNC Machining Center Rotary 4-axis  
Specifications X-axis 350-1400mm



### RHD series

High precision, high rigidity, high inertia  
Digital Control Rotary Positioning Table



### YHC 5-axis series

CNC Machining Center Rotary 5-axis  
Specifications X-axis 500-1400mm



### SHD series

Waterproof, Corrosion-resistant,  
Pollution-resistant  
Optimal Choice CNC Rotary Platform



### YHD series

Five-axis Interlinked Surface Processing  
High Precision Two-dimensional Rotary  
Motion Module



### YRD series

High Self-locking Force. High Precision.  
Lightweight  
Optimal Multi-functional CNC Rotary  
Platform



### YHR series

Automation, Dustproof, Waterproof,  
Pollution-resistant  
Light-duty Two-dimensional Rotary  
Motion Module



### Disc / Quill Type Tailstock

Diversification, Versatility, Multifunction-  
ality  
Customizable according to customer  
requirements

@013zzkal

WECHAT



## MANUFACTURER



**禾寶機械有限公司**

HER BAO MACHINERY CO.,LTD.

Address: 1F., No. 10-59, Yuangang, 2nd Neighborhood,  
Yuangang Vil., Yuanli Township, Miaoli County, Taiwan  
TEL: 037-865907  
FAX: 037-867760

## Mainland China Operations Center

**MESO Automatic (ShangHai) CO.,LTD**

Address: Room 101, Building 10, Lane 3029,  
Huaxu Road, Qingpu District, Shanghai  
TEL: 021-59761951 / 021-59761605