

YHD Series



YHR Series



RHD Series

Digital Control Rotary Positioning Table  
Two-dimensional rotational motion module

**High Precision**

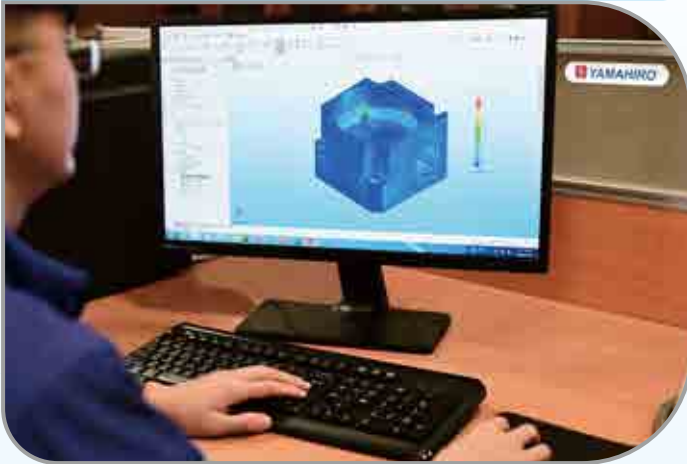
**High Rigidity**

**High Inertia**

# Product Introduction

YAMAHIRO specializes in multi-axis machining based on years of experience in four-axis and five-axis machining centers. We develop outstanding products for various industries, enhance application technology, and establish stable quality to meet international demands.

## Rigorous design, precise product analysis



## Precision manufacturing



Top brand of Japan  
Manufactured by a listed company

## ISO quality assurance



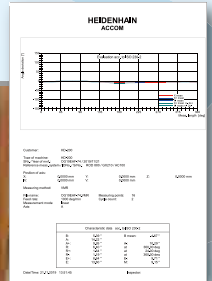
## Precision assembly



## Product application SIM analysis



## Final product inspection





# Applications

## Automation multi-station application



## Plastic processing and dispensing applications



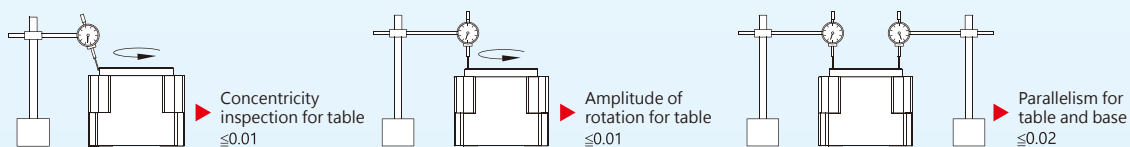
## Applications of CNC machining centers



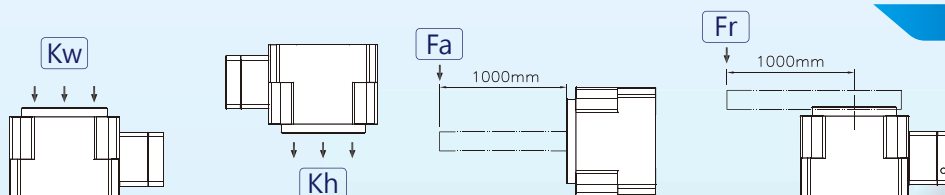
## Applications of specialized lathes



### Precision inspection



### Allowable load



Model	$Kw(kg)$	$Kh(kg)$	$Fa(N\cdot m)$	$Fr(N\cdot m)$
RHD100	200	150	200	250
RHD150	300	200	400	550
RHD200	800	460	700	900

\*Please inquire separately for any special requirements.

**High Precision High Rigidity High Inertia**  
**The optimal choice for rotational motion positioning.**

# RHD SERIES



## MODEL

**RHD100-30-**   **V1**

Model
Ratio
Motor Flange
Motor Frame Size

**RHD100 RHD150 RHD200**

## RHD Series Datasheet

Model		Unit	RHD100-30	RHD150-30	RHD200-30
Table Diameter		mm	Φ 95	Φ 130	Φ 200
Through-hole Diameter		mm	Φ 50	Φ 70	Φ 100
Max. Load	Horizontal	kg	200	300	800
	Hanging	kg	150	200	460
	Vertical	kg	100	150	250
Max. torque		N-m	150	300	560
Positioning Accuracy		sec	≤30°	≤30°	≤30°
Repeatability		sec	≤5°	≤5°	≤5°
Backlash		mm	≤0.005	≤0.005	≤0.005
Reduction Ratio			30	30	30
Max. Speed of Table		rpm/min	100	100	100
Motor		W	400W Servo Motor	750W Servo Motor	1KW Servo Motor
Weight		kg	8.5	18	56

\* If there are special requirements, please inquire individually. (Such as encoder)

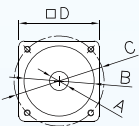
\* As our company continues to research and develop, specifications and designs are subject to change without prior notice.



**Professional Innovative**

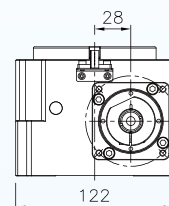
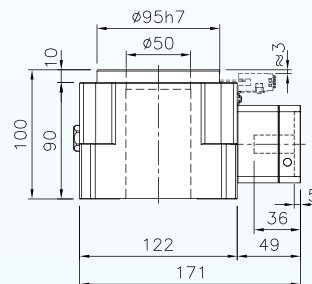
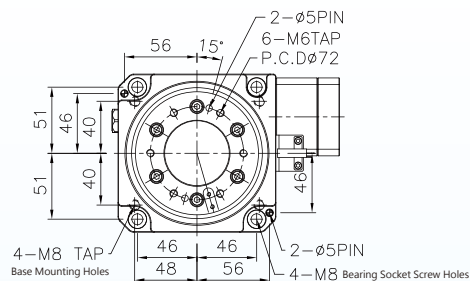
# RHD Series Exterior Dimension Chart

## RHD100-30

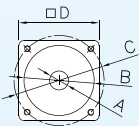


Motor Mounting Hole Parameters

Motor Flange Shaft Size	A Motor Shaft	B Motor Flange	C Motor Mounting Holes	D Motor Frame Size
V1	Φ14	Φ50	PCDΦ70-M4	60
V2	Φ14	Φ50	PCDΦ70-M5	60

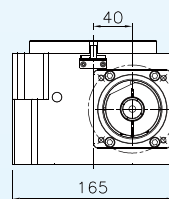
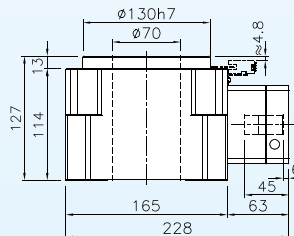
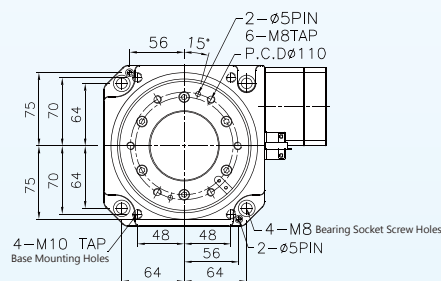


## RHD150-30

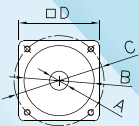


Motor Mounting Hole Parameters

Motor Flange Shaft Size	A Motor Shaft	B Motor Flange	C Motor Mounting Holes	D Motor Frame Size
V1	Φ19	Φ70	PCDΦ90-M5	80
V2	Φ19	Φ70	PCDΦ90-M6	80

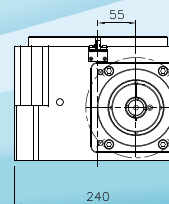
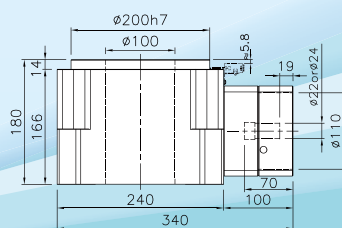
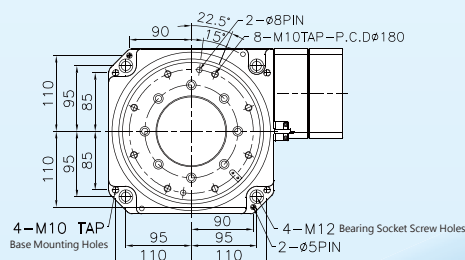


## RHD200-30



Motor Mounting Hole Parameters

Motor Flange Shaft Size	A Motor Shaft	B Motor Flange	C Motor Mounting Holes	D Motor Frame Size
V1	Φ22	Φ110	PCDΦ145-M6	130
V2	Φ24	Φ110	PCDΦ145-M8	130



# RHD+B SERIES



## MODEL

**RHD100B-30-**   **V1**

Model
Brake
Ratio
Motor Flange
Motor Frame Size

**RHD100B RHD150B RHD200B**

## RHD+B Series Datasheet

Model		Unit	RHD100B-30	RHD150B-30	RHD200B-30
Table Diameter		mm	Φ85	Φ126	Φ200
Max. Load	Horizontal	kg	200	300	800
	Hanging	kg	150	200	460
	Vertical	kg	100	150	250
Max. torque		N·m	150	300	560
Positioning Accuracy		sec	≤30°	≤30°	≤30°
Repeatability		sec	≤5°	≤5°	≤5°
Backlash		mm	≤0.005	≤0.005	≤0.005
Reduction Ratio			30	30	30
Max. Speed of Table		rpm/min	100	100	100
Motor		W	400W Servo Motor	750W Servo Motor	1KW Servo Motor
Weight		kg	15.2	31.7	88.5
Clamping System					
Pressure Resource			Pneumatic	Pneumatic	Pneumatic
Drive Pressure		kg/cm <sup>2</sup>	5	5	5
Clamping Torque		kgf·m	10	16	27

\* If there are special requirements, please inquire individually. (Such as encoder)

\* As our company continues to research and develop, specifications and designs are subject to change without prior notice.

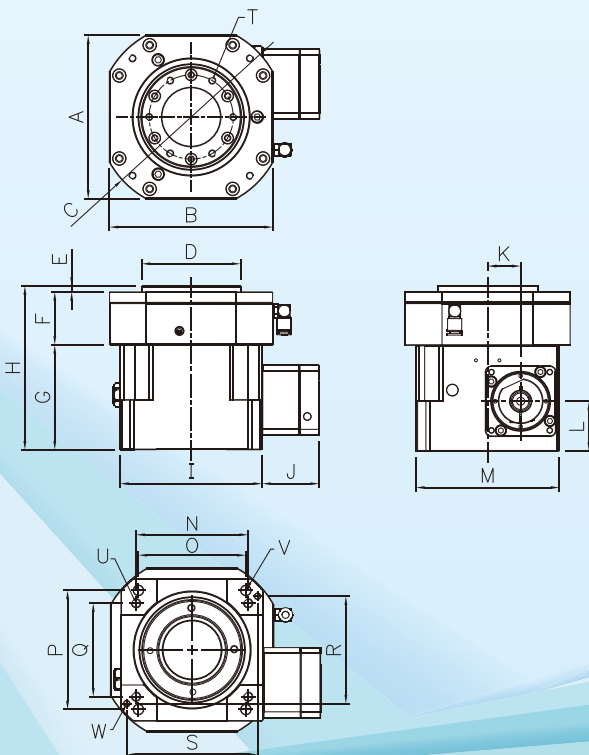
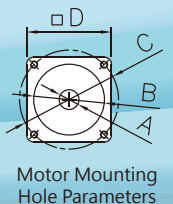
## Exterior Dimension Chart

	A	B	C	D	E	F	G	H	I	J
RHD100B	140	140	Φ160	Φ85	5	45.5	90	140.5	122	49
RHD150B	190	180	Φ225	Φ126	5	53	114	172	165	63
RHD200B	290	290	Φ320	Φ200	5	67	166	238	240	100

	K	L	M	N	O	P	Q	R	S
RHD100B	28	42.5	122	96	92	102	80	92	112
RHD150B	40	56.8	165	96	128	128	140	150	112
RHD200B	55	77	240	220	190	190	170	220	180

	T	U	V	W
RHD100B	6*M6*PCDΦ72	4*M8	4*M8 Countersunk screw hole	2Φ5pin
RHD150B	6*M8*PCDΦ105	4*M10	4*M10 Countersunk screw hole	2Φ5pin
RHD200B	8*M10*PCDΦ180	4*M10	4*M12 Countersunk screw hole	2Φ5pin

Motor Flange Shaft Size	A Motor Shaft	B Motor Flange	C Motor Mounting Holes	D Motor Frame Size
RHD100B	V1 Φ14	Φ50	PCDΦ70-M4	60
	V2 Φ14	Φ50	PCDΦ70-M5	60
RHD150B	V1 Φ19	Φ70	PCDΦ90-M5	80
	V2 Φ19	Φ70	PCDΦ90-M6	80
RHD200B	V1 Φ22	Φ110	PCDΦ145-M6	130
	V2 Φ24	Φ110	PCDΦ145-M8	130



# YHD SERIES



## MODEL

YHD100-   V1-   V1

Model
A-axis Motor Flange
B-axis Motor Flange

A-axis Motor Frame Number
B-axis Motor Frame Number

YHD100 YHD100-R/L YHD150

## YHD Series Datasheet

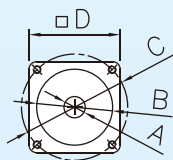
Model		Unit	YHD100	YHD100-R/L	YHD150
Max. Load		kg	15	15	25
Max. torque		N-m	38	38	110
Rotation Angle	A-axis	Degree	±110°	±110°	±110°
	B-axis		360°	360°	360°
Rotation accuracy		sec	≤ 30"	≤ 30"	≤ 30"
Repeatability	A-axis	sec	≤ 5"	≤ 5"	≤ 5"
	B-axis		≤ 5"	≤ 5"	≤ 5"
Rotation Radius		mm	100	100	130
Two-dimensional Concentricity		mm	0.02	0.02	0.02
Two-dimensional Parallelism		mm	0.02	0.02	0.02
Rotational vibration of the turntable surface		mm	0.01	0.01	0.01
Reduction Ratio	A-axis	-	1:30	1:30	1:30
	B-axis		1:10	1:10	1:30
Maximum Rotational Speed		rpm / min	200	200	100
Rotational Center Height		mm	315	233	163
Motor	A-axis	W	400	400	750
	B-axis		400	400	400
Weight		kg	47	47	78

\* If there are special requirements, please inquire individually.

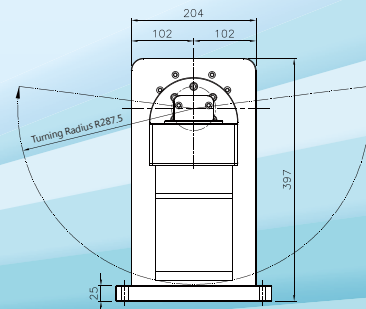
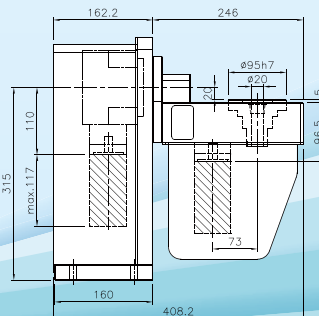
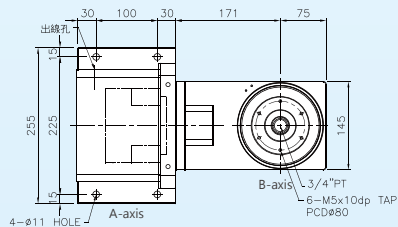
\* As our company continues to research and develop, specifications and designs are subject to change without prior notice.

## Exterior Dimension Chart

YHD100



Motor Mounting Hole Parameters

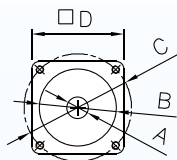


Motor Flange Shaft Size		A Motor Shaft	B Motor Flange	C Motor Mounting Holes	D Motor Frame Size
A-axis	V1	Φ14	Φ50	PCDΦ70-M4	60
	V2	Φ14	Φ50	PCDΦ70-M5	60
B-axis	V1	Φ14	Φ50	PCDΦ70-M4	60
	V2	Φ14	Φ50	PCDΦ70-M5	60



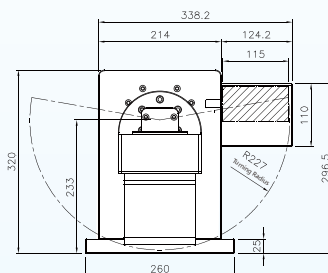
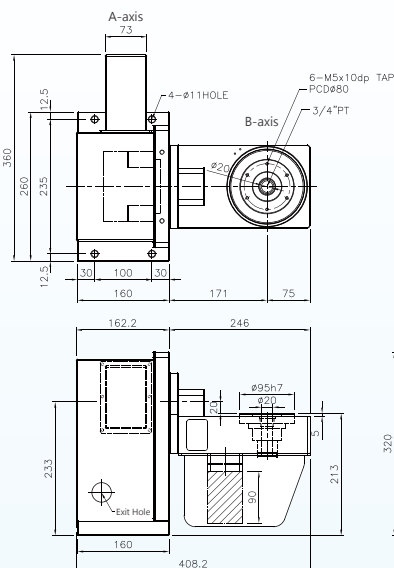
# YHD Series Exterior Dimension Chart

## YHD100-R

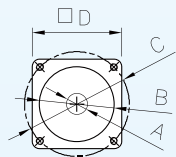


Motor Mounting Hole Parameters

Motor Flange Shaft Size		A Motor Shaft	B Motor Flange	C Motor Mounting Holes	D Motor Frame Size
A-axis	V1	Φ14	Φ50	PCDΦ70-M4	60
	V2	Φ14	Φ50	PCDΦ70-M5	60
B-axis	V1	Φ14	Φ50	PCDΦ70-M4	60
	V2	Φ14	Φ50	PCDΦ70-M5	60

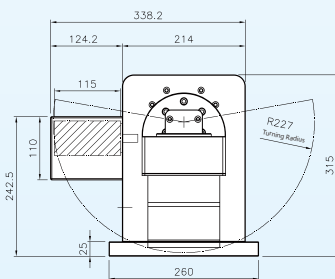
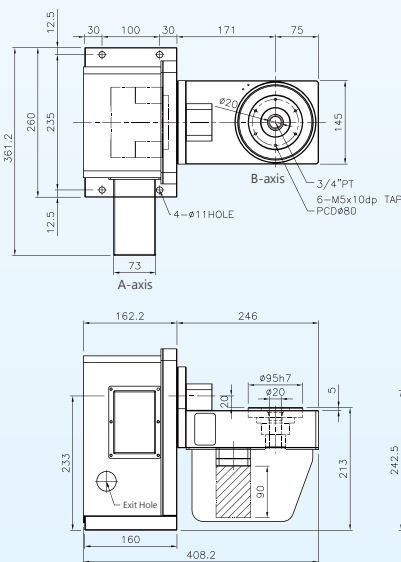


## YHD100-L

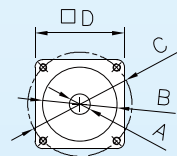


Motor Mounting Hole Parameters

Motor Flange Shaft Size		A Motor Shaft	B Motor Flange	C Motor Mounting Holes	D Motor Frame Size
A-axis	V1	Φ14	Φ50	PCDΦ70-M4	60
	V2	Φ14	Φ50	PCDΦ70-M5	60
B-axis	V1	Φ14	Φ50	PCDΦ70-M4	60
	V2	Φ14	Φ50	PCDΦ70-M5	60

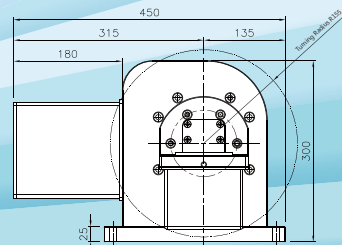
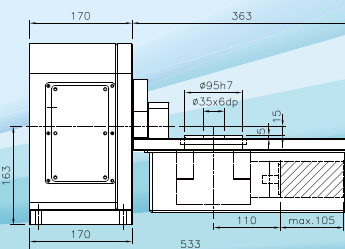
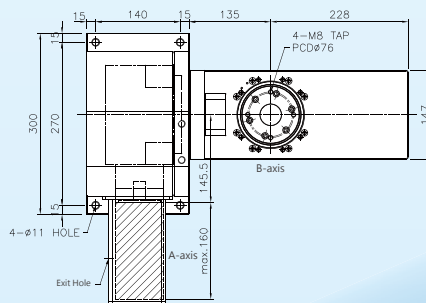


## YHD150



Motor Mounting Hole Parameters

Motor Flange Shaft Size		A Motor Shaft	B Motor Flange	C Motor Mounting Holes	D Motor Frame Size
A-axis	V1	Φ19	Φ70	PCDΦ90-M5	80
	V2	Φ19	Φ70	PCDΦ90-M6	80
B-axis	V1	Φ14	Φ50	PCDΦ70-M4	60
	V2	Φ14	Φ50	PCDΦ70-M5	60

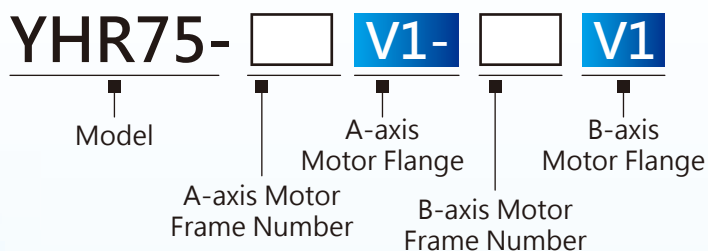




# YHR SERIES



## MODEL



YHR75    YHR75C

## YHR Series Datasheet

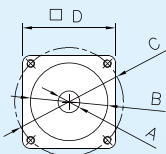
Model		Unit	YHR75	YHR75C
Max. Load		kg	6	10
Max. torque		N·m	15	15
Rotation Angle	A-axis	Degree	±95°	±95°
	B-axis		360°	360°
Rotation accuracy		sec	≤ 60"	≤ 60"
Repeatability	A-axis	sec	≤ 10"	≤ 10"
	B-axis		≤ 10"	≤ 10"
Rotation Radius		mm	130	130
Two-dimensional Concentricity		mm	≤ 0.02	≤ 0.02
Two-dimensional Parallelism		mm	≤ 0.02	≤ 0.02
Rotational vibration of the turntable surface		mm	≤ 0.01	≤ 0.01
Reduction Ratio	A-axis	-	1:8	1:8
	B-axis		1:10	1:10
Maximum Rotational Speed		rpm / min	300	300
Rotational Center Height		mm	135	150
Motor	A-axis	W	400W Servo Motor	400W Servo Motor
	B-axis		400W Servo Motor	400W Servo Motor
Weight		kg	9	15

\* If there are special requirements, please inquire individually.

\* As our company continues to research and develop, specifications and designs are subject to change without prior notice.

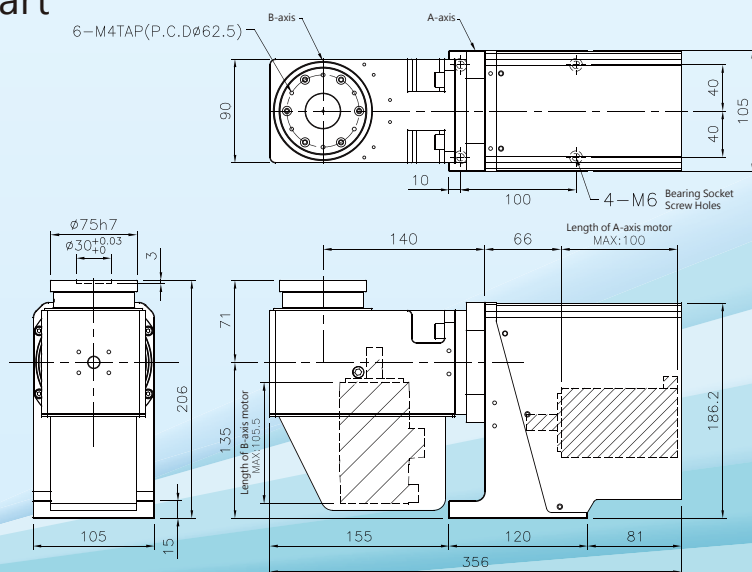
## YHR Series Exterior Dimension Chart

### YHR75

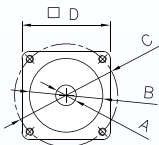


Motor Mounting Hole Parameters

Motor Flange Shaft Size		A Motor Shaft	B Motor Flange	C Motor Mounting Holes	D Motor Frame Size
A-axis	V1	Φ14	Φ50	PCDΦ70-M4	60
	V2	Φ14	Φ50	PCDΦ70-M5	60
B-axis	V1	Φ14	Φ50	PCDΦ70-M4	60
	V2	Φ14	Φ50	PCDΦ70-M5	60



## YHR75C



### Motor Mounting Hole Parameters

6-M4TAP(P.C.D.ø62.5)

12.5 12.5 125 90 12.5 300 26 26 4-ø9 62.5 62.5 150

ø75h7  
ø30f8/g7  
3  
221  
150  
150  
15  
71  
135  
140  
66  
Length of A-axis motor  
MAX:100  
Length of B-axis motor  
MAX:105.5  
352  
81  
436.5  
201.2

# YHA SERIES

Three piezo actuators of the YHA series are shown. They are white rectangular blocks with black mounting bases and circular ports. The actuators are arranged in a row, increasing in size from left to right. The largest actuator on the right has a red logo on its side.YHA75-  V1

Motor Flange

Motor Frame Size

YHA75   YHA100   YHA120

## YHA Series Datasheet

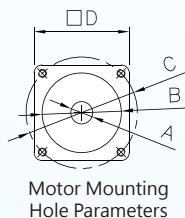
\* If there are special requirements, please inquire individually.  
\* As our company continues to research and develop, specifications and designs are subject to change without prior notice.

\* If there are special requirements, please inquire individually.

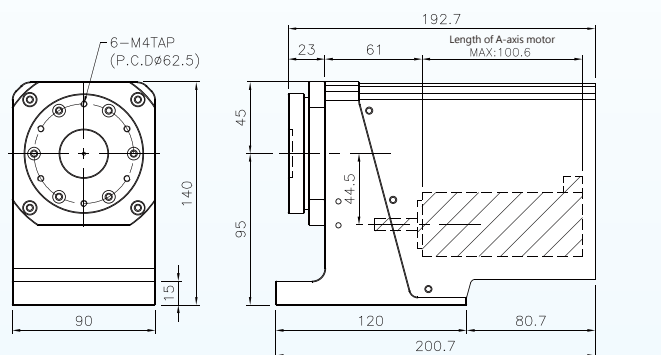
\* As our company continues to research and develop, specifications and designs are subject to change without prior notice.

# YHA Series Exterior Dimension Chart

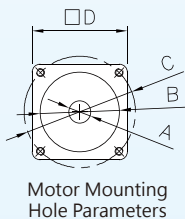
## YHA75



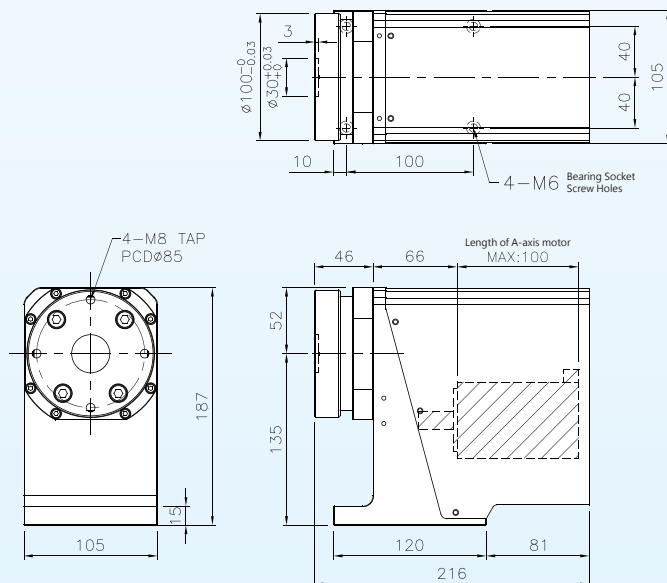
Motor Flange Shaft Size		A Motor Shaft	B Motor Flange	C Motor Mounting Holes	D Motor Frame Size
A-axis	V1	Φ14	Φ50	PCDΦ70-M4	60
	V2	Φ14	Φ50	PCDΦ70-M5	60



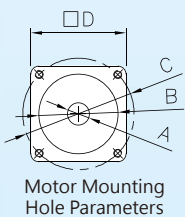
## YHA100



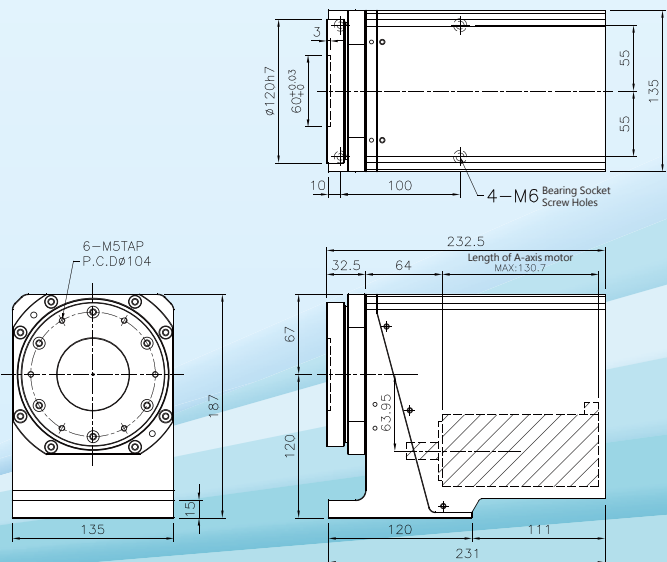
Motor Flange Shaft Size		A Motor Shaft	B Motor Flange	C Motor Mounting Holes	D Motor Frame Size
A-axis	V1	Φ14	Φ50	PCDΦ70-M4	60
	V2	Φ14	Φ50	PCDΦ70-M5	60



## YHA120



Motor Flange Shaft Size		A Motor Shaft	B Motor Flange	C Motor Mounting Holes	D Motor Frame Size
A-axis	V1	Φ14	Φ50	PCDΦ70-M4	60
	V2	Φ14	Φ50	PCDΦ70-M5	60



► **Japanese Core** ► **Taiwan Assembly** ► **Quality Assurance**

## All Series



### YH 4-axis series

CNC Machining Center Rotary 4-axis  
Specifications X-axis 350-1400mm



### RHD series

High precision, high rigidity, high inertia  
Digital Control Rotary Positioning Table



### YHC 5-axis series

CNC Machining Center Rotary 5-axis  
Specifications X-axis 500-1400mm



### SHD series

Waterproof, Corrosion-resistant,  
Pollution-resistant  
Optimal Choice CNC Rotary Platform



### YHD series

Five-axis Interlinked Surface Processing  
High Precision Two-dimensional Rotary  
Motion Module



### YRD series

High Self-locking Force. High Precision.  
Lightweight  
Optimal Multi-functional CNC Rotary  
Platform



### YHR series

Automation, Dustproof, Waterproof,  
Pollution-resistant  
Light-duty Two-dimensional Rotary  
Motion Module



### Disc / Quill Type Tailstock

Diversification, Versatility, Multifunction-  
ality  
Customizable according to customer  
requirements

## MANUFACTURER



**禾寶機械有限公司**

HER BAO MACHINERY CO.,LTD.

Address: 1F., No. 10-59, Yuangang, 2nd Neighborhood,  
Yuangang Vil., Yuanli Township, Miaoli County, Taiwan  
TEL: 037-865907  
FAX: 037-867760

## Mainland China Operations Center

**MESO Automatic (ShangHai) CO.,LTD**

Address: Room 101, Building 10, Lane 3029,  
Huaxu Road, Qingpu District, Shanghai  
TEL: 021-59761951 / 021-59761605

@013zzkal

WECHAT

