



 **YAMAHIRO®**

HER BAO MACHINERY

Digital Control
Rotary Positioning Table

High Precision

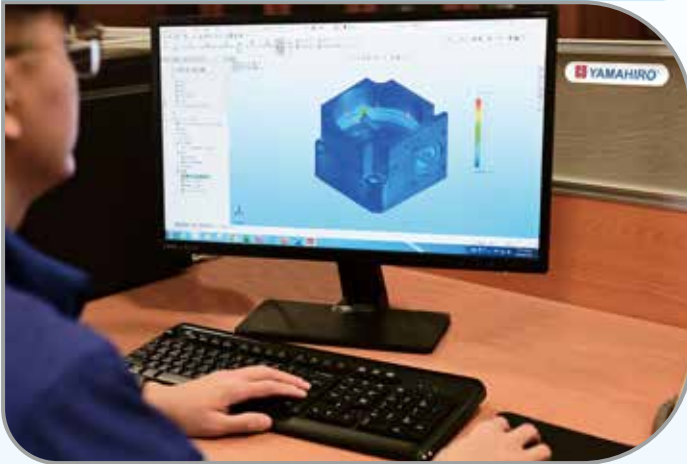
High Rigidity

High Inertia

Product Introduction

YAMAHIRO specializes in multi-axis machining based on years of experience in four-axis and five-axis machining centers. We develop outstanding products for various industries, enhance application technology, and establish stable quality to meet international demands.

Rigorous design, precise product analysis



Precision manufacturing



Top brand of Japan
Manufactured by a listed company

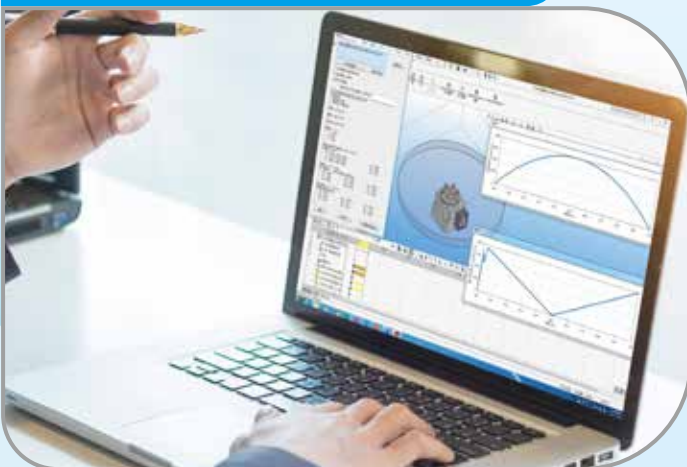
ISO quality assurance



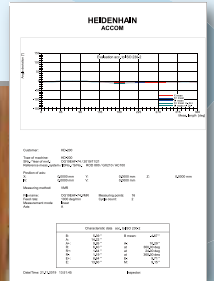
Precision assembly



Product application SIM analysis

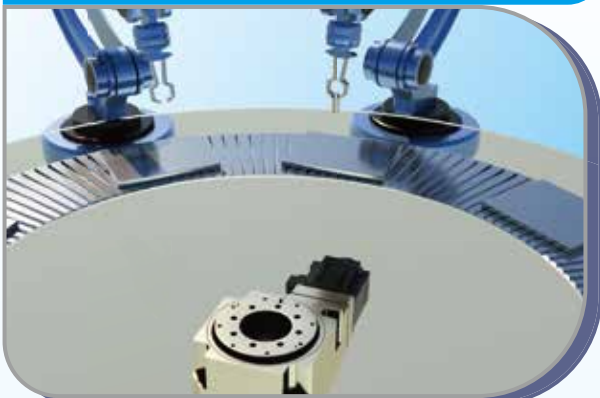


Final product inspection



Applications

Automation multi-station application



Plastic processing and dispensing applications



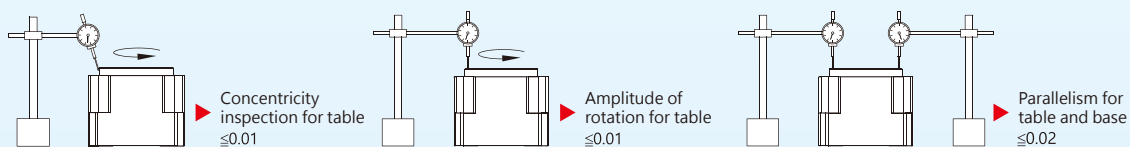
Applications of CNC machining centers



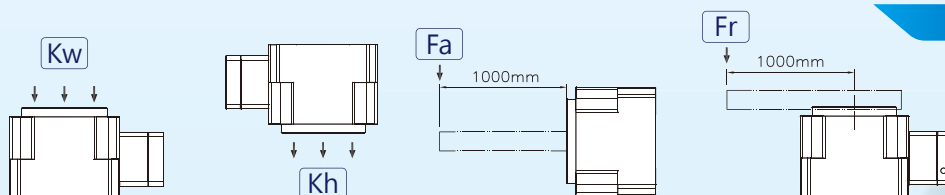
Applications of specialized lathes



Precision inspection



Allowable load



Model	Kw(kg)	Kh(kg)	Fa(N-m)	Fr(N-m)
RHD100	200	150	200	250
RHD150	300	200	400	550
RHD200	800	460	700	900

*Please inquire separately for any special requirements.

High Precision High Rigidity High Inertia
The optimal choice for rotational motion positioning.

RHD SERIES



MODEL

RHD100-30- **V1**

Model
Ratio
Motor Flange
Motor Frame Size

RHD100 RHD150 RHD200

RHD Series Datasheet

Model		Unit	RHD100-30	RHD150-30	RHD200-30
Table Diameter		mm	Φ95	Φ130	Φ200
Through-hole Diameter		mm	Φ50	Φ70	Φ100
Max. Load	Horizontal	kg	200	300	800
	Hanging	kg	150	200	460
	Vertical	kg	100	150	250
Max. torque		N-m	150	300	560
Positioning Accuracy		sec	≤30°	≤30°	≤30°
Repeatability		sec	≤5°	≤5°	≤5°
Backlash		mm	≤0.005	≤0.005	≤0.005
Reduction Ratio			30	30	30
Max. Speed of Table		rpm/min	100	100	100
Motor		W	400W Servo Motor	750W Servo Motor	1KW Servo Motor
Weight		kg	8.5	18	56

* If there are special requirements, please inquire individually. (Such as encoder)

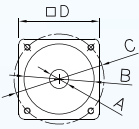
* As our company continues to research and develop, specifications and designs are subject to change without prior notice.



Professional Innovative

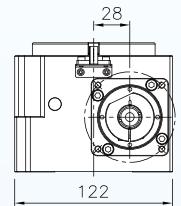
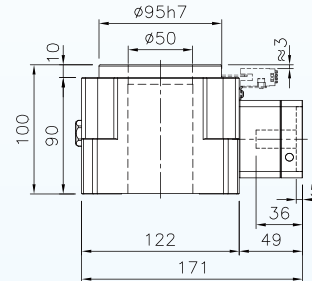
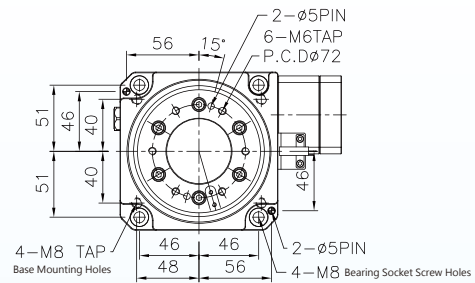
RHD Series Exterior Dimension Chart

RHD100-30

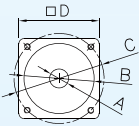


Motor Mounting Hole Parameters

Motor Flange Shaft Size	A Motor Shaft	B Motor Flange	C Motor Mounting Holes	D Motor Frame Size
V1	Φ14	Φ50	PCDΦ70-M4	60
V2	Φ14	Φ50	PCDΦ70-M5	60

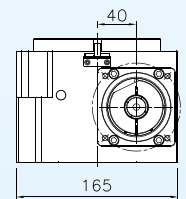
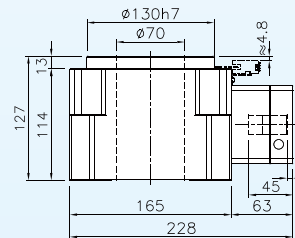
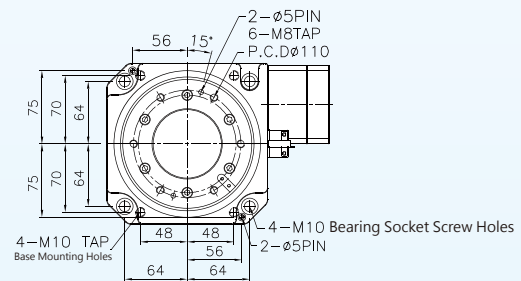


RHD150-30

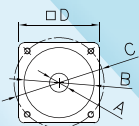
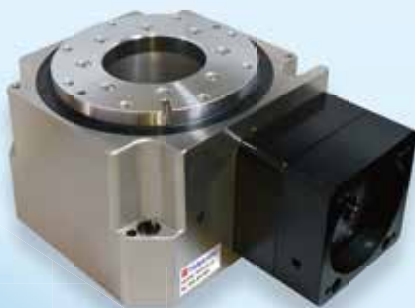


Motor Mounting Hole Parameters

Motor Flange Shaft Size	A Motor Shaft	B Motor Flange	C Motor Mounting Holes	D Motor Frame Size
V1	Φ19	Φ70	PCDΦ90-M5	80
V2	Φ19	Φ70	PCDΦ90-M6	80

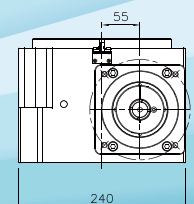
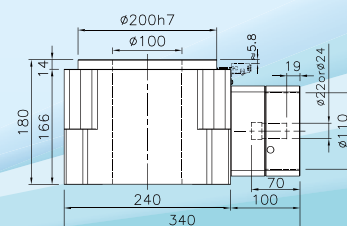
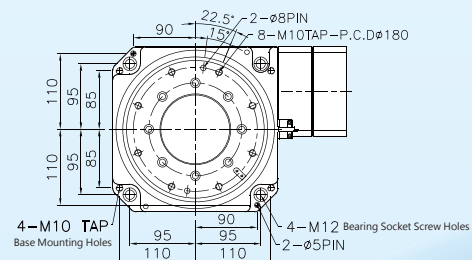


RHD200-30



Motor Mounting Hole Parameters

Motor Flange Shaft Size	A Motor Shaft	B Motor Flange	C Motor Mounting Holes	D Motor Frame Size
V1	Φ22	Φ110	PCDΦ145-M6	130
V2	Φ24	Φ110	PCDΦ145-M8	130



RHD+B SERIES



MODEL

RHD100B-30- **V1**

Model
Brake
Ratio
Motor Flange
Motor Frame Size

RHD100B RHD150B RHD200B

RHD+B Series Datasheet

Model		Unit	RHD100B-30	RHD150B-30	RHD200B-30
Table Diameter		mm	Φ85	Φ126	Φ200
Max. Load	Horizontal	kg	200	300	800
	Hanging	kg	150	200	460
	Vertical	kg	100	150	250
Max. torque		N·m	150	300	560
Positioning Accuracy		sec	≤30°	≤30°	≤30°
Repeatability		sec	≤5°	≤5°	≤5°
Backlash		mm	≤0.005	≤0.005	≤0.005
Reduction Ratio			30	30	30
Max. Speed of Table		rpm/min	100	100	100
Motor		W	400W Servo Motor	750W Servo Motor	1KW Servo Motor
Weight		kg	15.2	31.7	88.5
Clamping System					
Pressure Resource			Pneumatic	Pneumatic	Pneumatic
Drive Pressure		kg/cm ²	5	5	5
Clamping Torque		kgf·m	10	16	27

* If there are special requirements, please inquire individually. (Such as encoder)

* As our company continues to research and develop, specifications and designs are subject to change without prior notice.

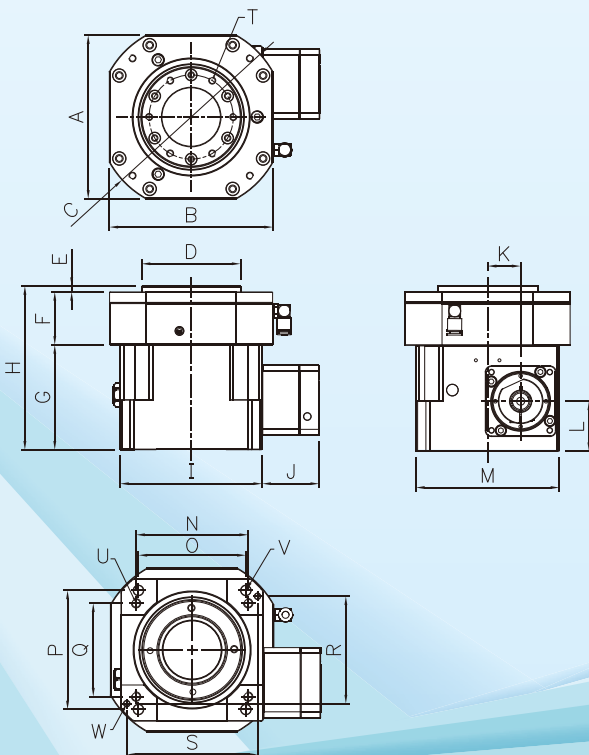
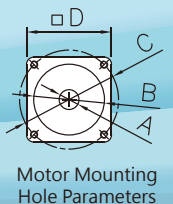
Exterior Dimension Chart

	A	B	C	D	E	F	G	H	I	J
RHD100B	140	140	Φ160	Φ85	5	45.5	90	140.5	122	49
RHD150B	190	180	Φ225	Φ126	5	53	114	172	165	63
RHD200B	290	290	Φ320	Φ200	5	67	166	238	240	100

	K	L	M	N	O	P	Q	R	S
RHD100B	28	42.5	122	96	92	102	80	92	112
RHD150B	40	56.8	165	96	128	128	140	150	112
RHD200B	55	77	240	220	190	190	170	220	180

	T	U	V	W
RHD100B	6*M6*PCDΦ72	4*M8	4*M8 Countersunk screw hole	2Φ5pin
RHD150B	6*M8*PCDΦ105	4*M10	4*M10 Countersunk screw hole	2Φ5pin
RHD200B	8*M10*PCDΦ180	4*M10	4*M12 Countersunk screw hole	2Φ5pin

Motor Flange Shaft Size	A Motor Shaft	B Motor Flange	C Motor Mounting Holes	D Motor Frame Size
RHD100B	V1 Φ14	Φ50	PCDΦ70-M4	60
	V2 Φ14	Φ50	PCDΦ70-M5	60
RHD150B	V1 Φ19	Φ70	PCDΦ90-M5	80
	V2 Φ19	Φ70	PCDΦ90-M6	80
RHD200B	V1 Φ22	Φ110	PCDΦ145-M6	130
	V2 Φ24	Φ110	PCDΦ145-M8	130



SHD SERIES



MODEL

SHD100-30- V1-C-S

Model

Ratio

Motor Flange

Motor Frame Size

Cover

(optional)

Leak Detection
Sensor

(optional)

SHD100-30 SHD150-30 SHD200-30

SHD Series Datasheet

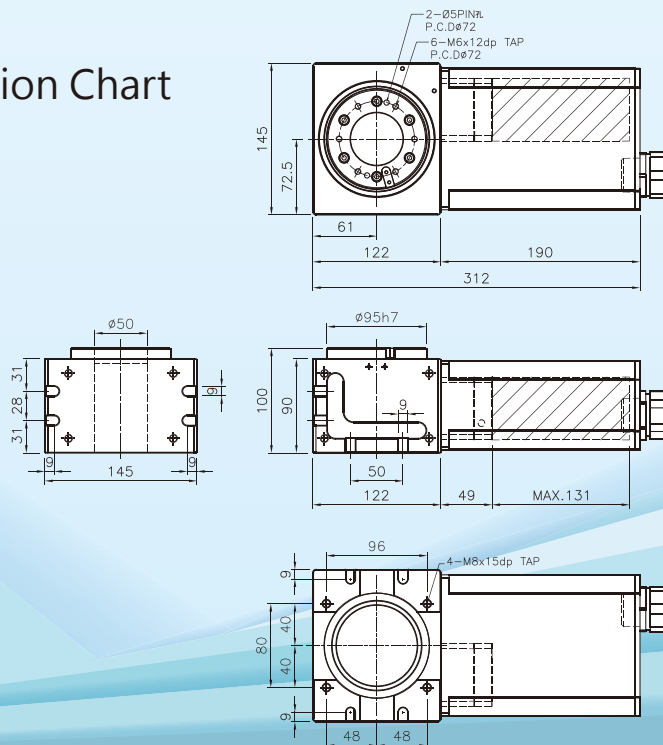
Model		Unit	SHD100-30	SHD150-30	SHD200-30
Table Diameter		mm	Φ95	Φ130	Φ200
Through-hole Diameter		mm	Φ50	Φ70	Φ100
Max. Load	Horizontal	kg	200	300	800
	Hanging	kg	150	200	460
	Vertical	kg	100	150	250
Max. torque		N-m	150	300	560
Positioning Accuracy		arc-sec	≤30	≤30	≤30
Repeatability		arc-sec	≤5	≤5	≤5
Backlash		mm	≤0.005	≤0.005	≤0.005
Reduction Ratio			30	30	30
Max. Speed of Table		rpm/min	100	100	100
Motor		W	400W Servo Motor	750W Servo Motor	1KW Servo Motor
Weight		kg	11.7	25.2	73.8

* If there are special requirements, please inquire individually. (Such as encoder)

* As our company continues to research and develop, specifications and designs are subject to change without prior notice.

Exterior Dimension Chart

SHD100-30



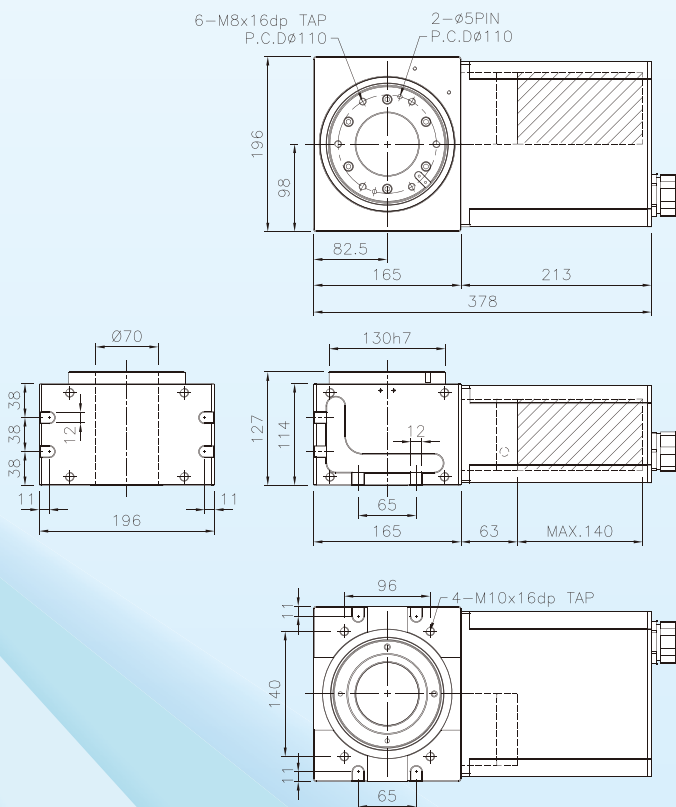
Product Features

- Excellent Waterproof Performance
- High Safety Rating
- High Torque
- Accurate Positioning
- Low Backlash

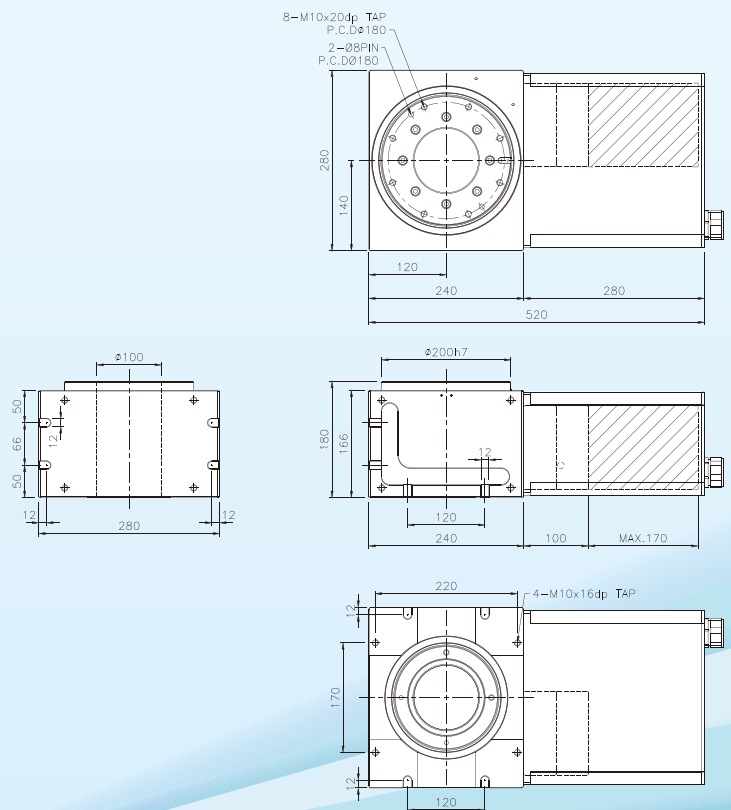


Exterior Dimension Chart

SHD150-30



SHD200-30



Product Introduction

Core Technology

Worm Gears from Japan ウォームギヤ

Top Brand in Japan, Manufactured by a Listed Company



Application Description

This rotary table features an IP65 waterproof rating and self-locking capability. It can be used for rotating shafts in grinding equipment (e.g., edge grinding, chamfering, etc.), as well as in polishing equipment (as the fourth or fifth axis) and other applications.

Assembly Inspection

All products adhere to strict ISO full inspection standards, with a process involving six stages of inspection:
Material inspection→Part inspection→Assembly inspection→Rotation angle positioning inspection→Motor load inspection→Operation running-in inspection

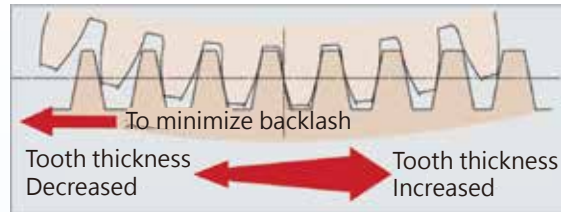


▲ All aluminum alloy steel bodies undergo three-dimensional measurements before assembly and after final production to ensure geometric precision.



▲ The indexing positioning accuracy is inspected using a circular optical encoder imported from Germany. After a 24-hour test run, a second inspection is conducted to verify the accuracy.

Japanese expertise in rotary worktable technology



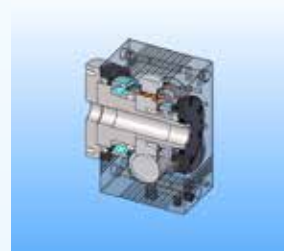
Material: Utilizing the top Japanese brand worm gear assembly known for its high hardness, low friction coefficient, and precise transmission positioning coefficient. The worm gear is made of a special high-tensile brass from Japan.

Tooth Features:

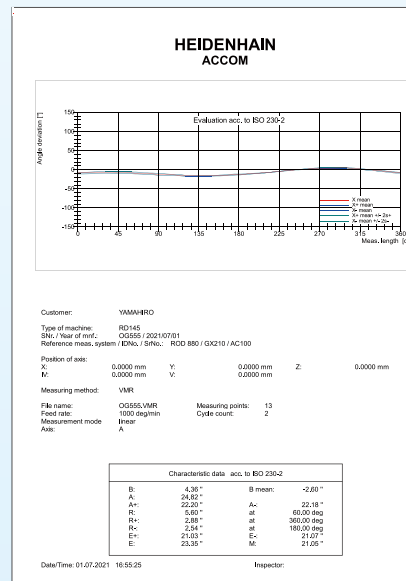
- ▶ Increased tooth depth enhances meshing rigidity.
- ▶ Special design with variable tooth thickness automatically adjusts the backlash precision.

Structure

The main body is crafted from a single piece of aluminum alloy using CNC rotary table as its design foundation.

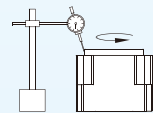


Precision Inspection



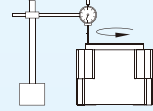
Concentricity Inspection for table

▶ ≤0.01mm



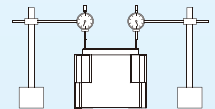
Amplitude of rotation for table

▶ ≤0.01mm



Parallelism for table and base

▶ ≤0.02mm



▲ Continuous 24-hour trial operation ensures the stability of all mechanical components.

YRD SERIES

MODEL

YRD100-30- **V1** -C-S

Model

Ratio

Motor Flange

Motor Frame Size

Cover
(optional)

Leak Detection
Sensor
(optional)

YRD100-30 YRD145-60



YRD Series Datasheet

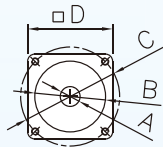
Model		Unit	YRD100-30	YRD145-60
Table Diameter		mm	Φ 100	Φ 145
Through-hole Diameter		mm	Φ 20	Φ 40
Max. Load	Horizontal	kg	50	80
	Hanging	kg	30	50
	Vertical	kg	16	35
Max. torque		N-m	80	450
Positioning Accuracy		arc-sec	≤60	≤45
Repeatability		arc-sec	≤10	≤10
Backlash		mm	≤0.01	≤0.01
Reduction Ratio			30	60
Max. Speed of Table		rpm/min	100	50
Motor		W	400W Servo Motor	750W Servo Motor
Weight		kg	6.5	16

* If there are special requirements, please inquire individually.

* As our company continues to research and develop, specifications and designs are subject to change without prior notice.

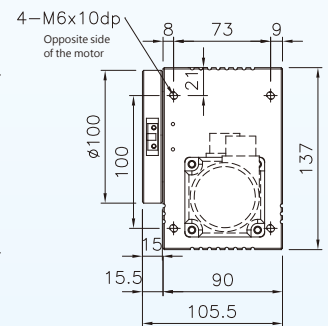
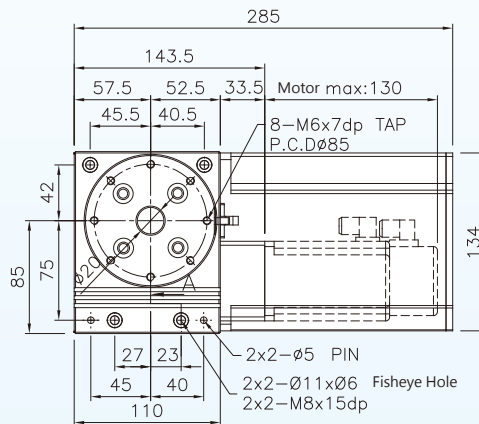
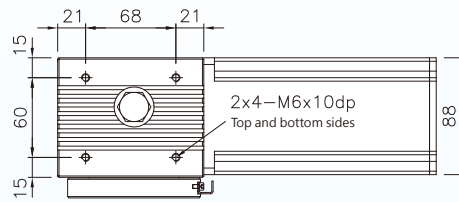
Exterior Dimension Chart

YRD100-30

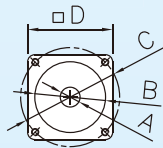
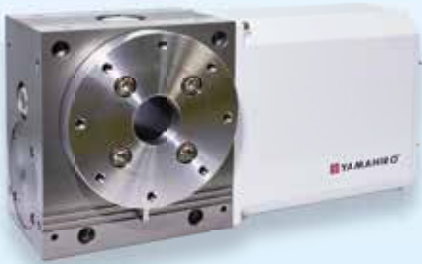


Motor Mounting Hole Parameters

Motor Flange Shaft Size	A Motor Shaft	B Motor Flange	C Motor Mounting Holes	D Motor Frame Size
V1	Φ14	Φ50	PCDΦ70-M4	60
V2	Φ14	Φ50	PCDΦ70-M5	60

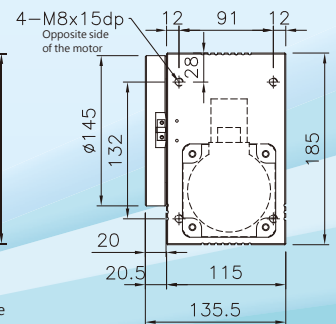
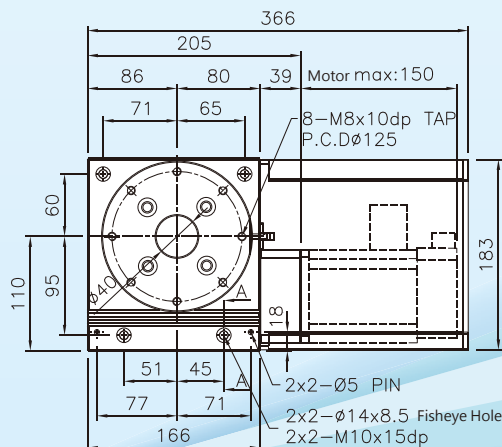
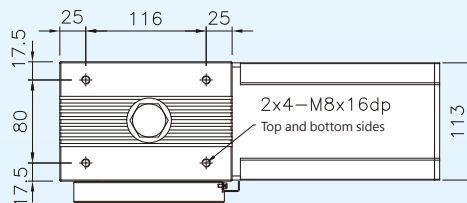


YRD145-60



Motor Mounting Hole Parameters

Motor Flange Shaft Size	A Motor Shaft	B Motor Flange	C Motor Mounting Holes	D Motor Frame Size
V1	Φ19	Φ70	PCDΦ90-M5	80
V2	Φ19	Φ70	PCDΦ90-M6	80



► **Japanese Core** ► **Taiwan Assembly** ► **Quality Assurance**

All Series



YH 4-axis series

CNC Machining Center Rotary 4-axis
Specifications X-axis 350-1400mm



RHD series

High precision, high rigidity, high inertia
Digital Control Rotary Positioning Table



YHC 5-axis series

CNC Machining Center Rotary 5-axis
Specifications X-axis 500-1400mm



SHD series

Waterproof, Corrosion-resistant,
Pollution-resistant
Optimal Choice CNC Rotary Platform



YHD series

Five-axis Interlinked Surface Processing
High Precision Two-dimensional Rotary
Motion Module



YRD series

High Self-locking Force. High Precision.
Lightweight
Optimal Multi-functional CNC Rotary
Platform



YHR series

Automation, Dustproof, Waterproof,
Pollution-resistant
Light-duty Two-dimensional Rotary
Motion Module



Disc / Quill Type Tailstock

Diversification, Versatility, Multifunction-
ality
Customizable according to customer
requirements

@013zzkal

WECHAT



MANUFACTURER



禾寶機械有限公司

HER BAO MACHINERY CO.,LTD.

Address: 1F., No. 10-59, Yuangang, 2nd Neighborhood,
Yuangang Vil., Yuanli Township, Miaoli County, Taiwan
TEL: 037-865907
FAX: 037-867760

Mainland China Operations Center

MESO Automatic (ShangHai) CO.,LTD

Address: Room 101, Building 10, Lane 3029,
Huaxu Road, Qingpu District, Shanghai
TEL: 021-59761951 / 021-59761605